

The installation procedure for the dedicated Wave Processor program for the 8870-20

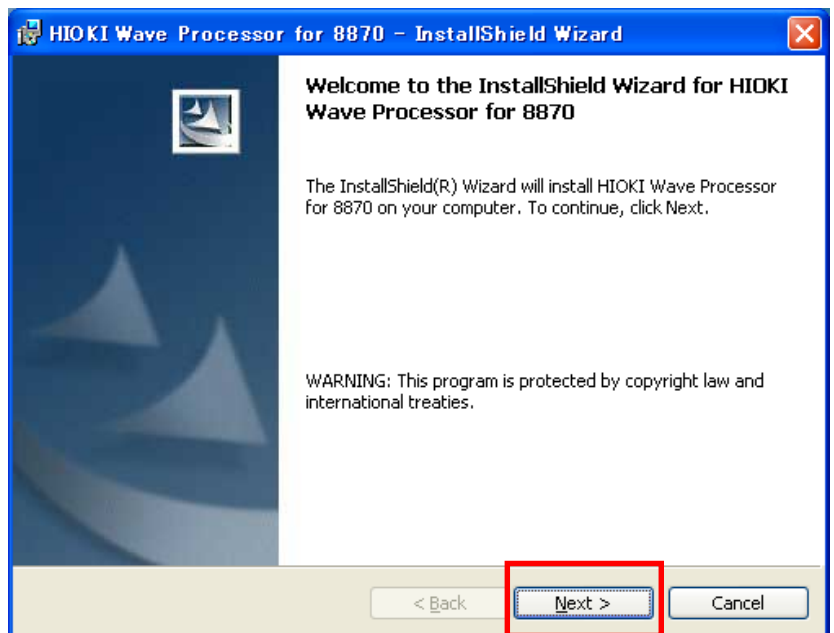
1. Turn on the computer.

If the computer's operating system is Windows 2000 or XP Professional, log on as an "administrator" user. Before starting the installer, close all currently running applications.

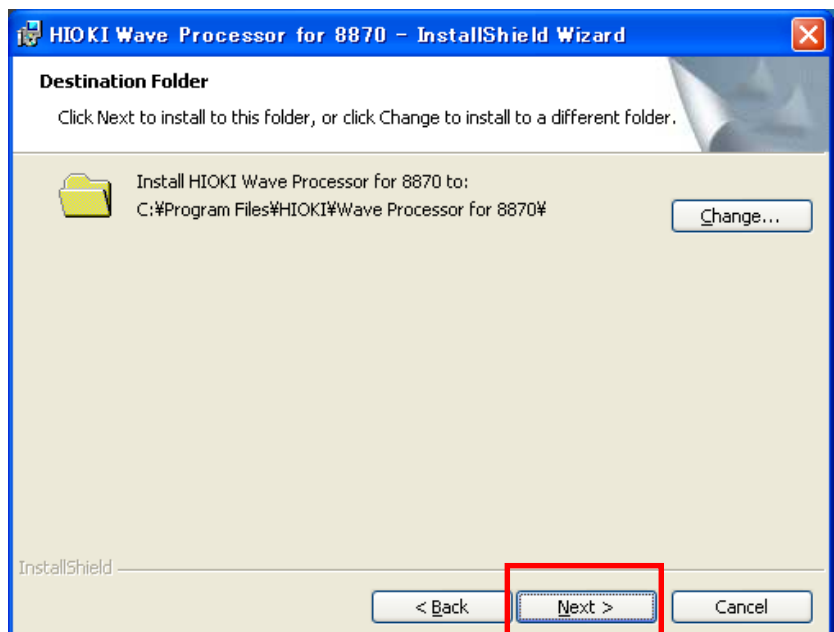
2. Download and save the compressed file. Then, extract the compressed file to install.
3. Double click the file "\\8870Application\English\setup.exe" to execute it.

After executing "setup.exe" file, follow the screen instructions to complete the installation.

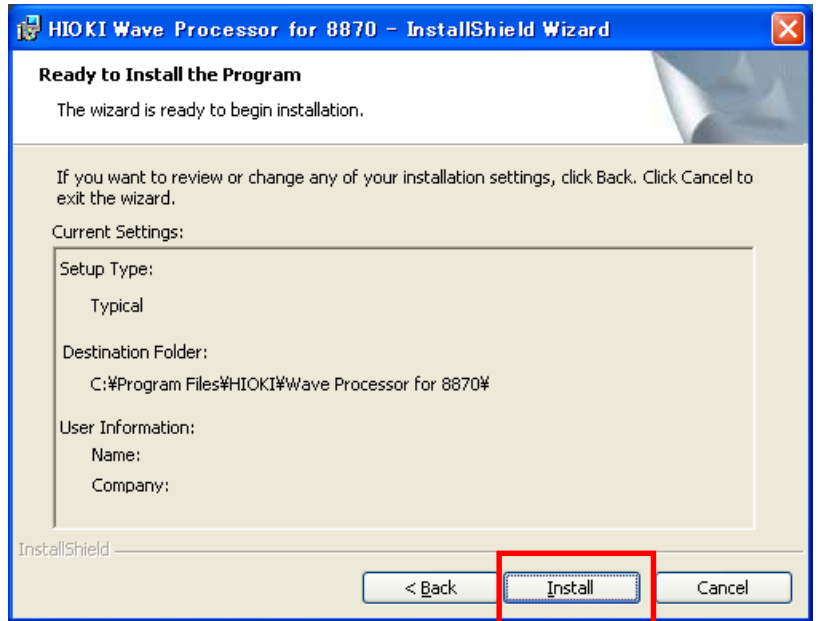
4. Click [Next].



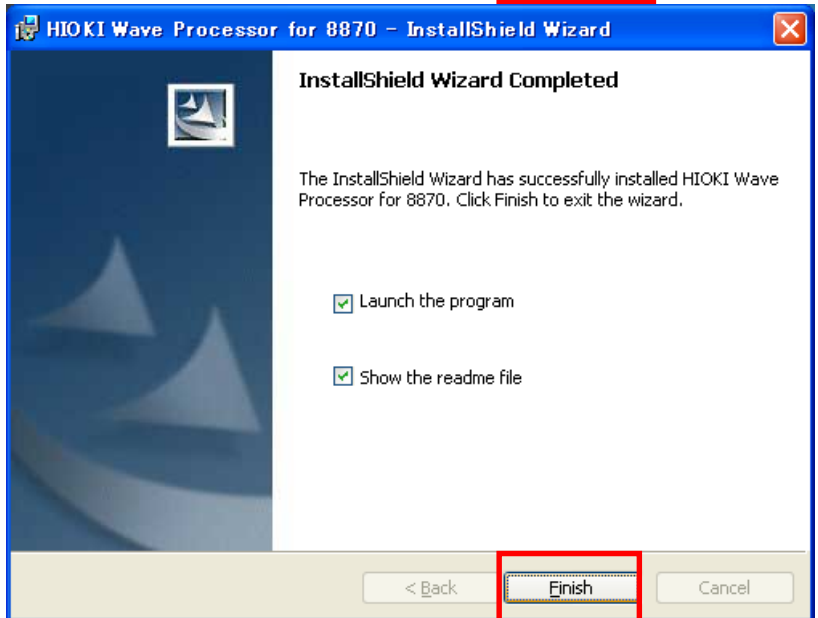
5. To change the installation destination, click [Change] and specify the destination. Then click [Next].



6. Click [Install].

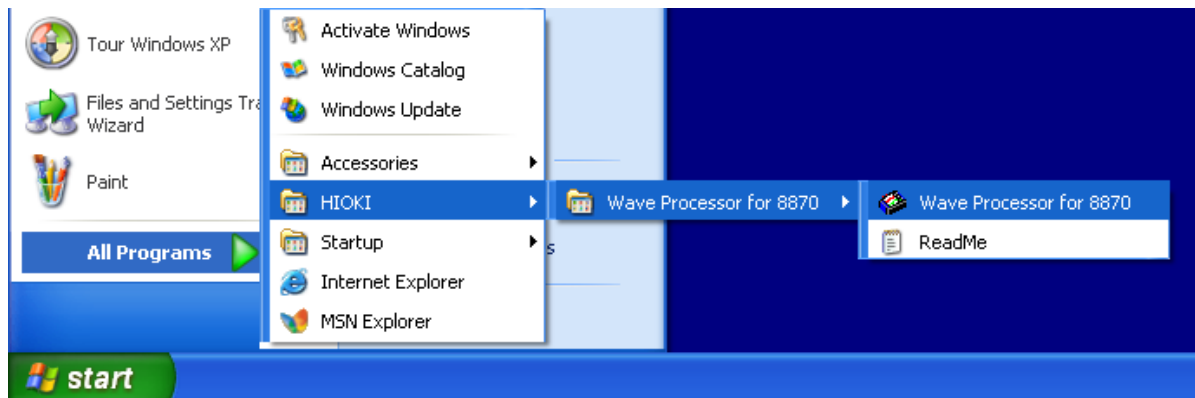


7. Click [Finish] to complete the installation.



8. Running the Application Program

From the Windows [Start] menu, select [Program] – [HIOKI] – [Wave Processor for 8870] – [Wave Processor for 8870] to start the program.



9. Finish