

# Upgrading the IM3590's software version

※Follow the procedure shown below to upgrade the IM3590 software.

※When the software is upgraded, all the settings will be reset to the factory default.

If the trouble disappears setting, please be sure to perform steps ① and ③.

If you do not need to save the settings please go only ②.

※Do not turn off the instrument or remove the USB memory stick during the upgrading, which might damage the instrument.

## ① Saving all settings of instrument

1. Insert the USB memory stick into the USB port of the IM3590.
2. Make sure that the USB memory icon is displayed on the screen (See Fig. 1).
3. Touch the **[FILE]** button (See Fig. 1).



Fig.1

4. Touch the **[OPTION]** button (See Fig. 2).



Fig.2

5. Touch the **[ALL SAVE]** button (See Fig. 3).

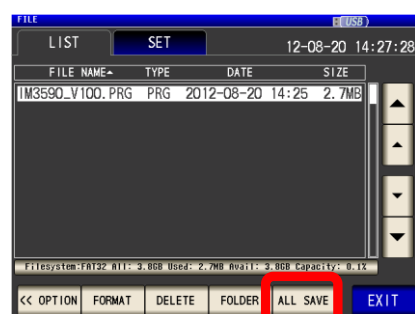


Fig.3

6. Touch the **[SAVE]** button in the save confirmation screen (See Fig. 4).

- The setting file and panel save data are saved to a folder of the save date and time that is created automatically in the **[SETTING]** folder.
- The date and time are automatically assigned to the folder name and file name.

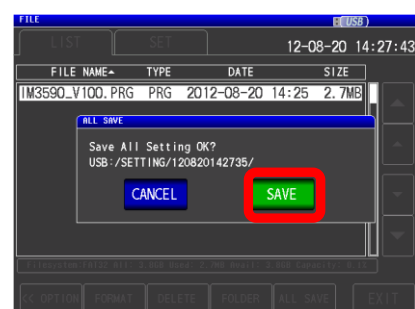


Fig.4

The current setting has been saved to USB.

## ② Upgrading the software version

1. Copy the upgrade file to the USB memory.  
(See Fig.5) The file name reflects the version number.
2. Insert the USB memory stick into the USB port of the IM3590.
3. Make sure that the USB memory icon is displayed on the screen (See Fig. 6).
4. Touch the **[FILE]** button (See Fig. 6).
5. Select the upgrade file using the **[▲]** and **[▼]** button and touch the **[VER UP]** button (See Fig. 7).
6. When the upgrade screen is displayed, touch the **[START]** button (See Fig. 8-1).
7. You will hear a series of beeps (for about 30 seconds).

When you touch the 「START」 button, the copy will start. Wait until the upgrade of the software is completed. Do not turn off the instrument or remove the USB memory stick during the upgrading.

8. When the version upgrade is completed, the screen turns white and displays “#Version up complete. #Turn off the power switch on the back.” (See Fig. 8-2).

※If the version of the main unit software is V1.07 or earlier, the screen display will not change even after the version upgrade is completed. After the beeps change to a continuous tone, the upgrade is complete.

9. Turn off the power switch on the back.
10. Remove the USB memory stick.
11. Turn on the power switch on the back.
12. Touch the buttons in order: **[SET]** → **[ADVANCED]** → **[RESET]** → **[RESET]** to reset the IM3590.
13. Touch the buttons in order: **[SYS]** → **[TEST]** → **[ROM/RAM TEST]** to ensure that the ROM/RAM test result is **[PASS]**.
14. This completes the upgrade of the software.
15. You can confirm the software version on the screen by touching the buttons: **[SYS]** → **[INFO]**.

Version and check-up is completed.

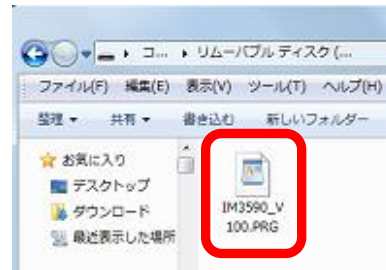


Fig.5



Fig.6

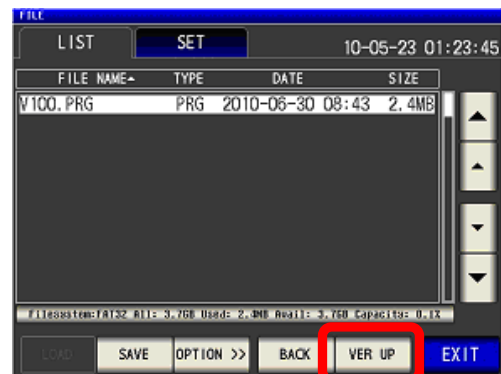


Fig.7

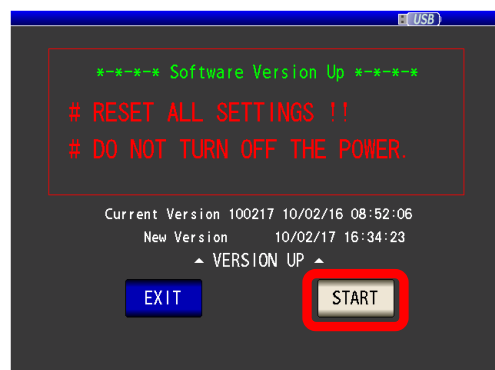


Fig.8-1

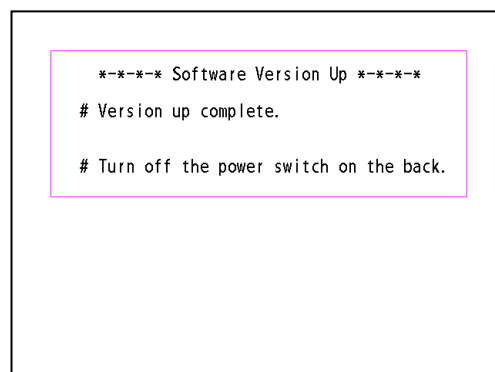


Fig.8-2

※If the instrument will not power on after the upgrade or exhibits another problem, contact your HIOKI distributor.

### ③ Load all saved setting

1. Insert the USB memory stick into the USB port of the IM3590.
2. Make sure that the USB memory icon is displayed on the screen (See Fig. 9).
3. Touch the [FILE] button (See Fig. 9).

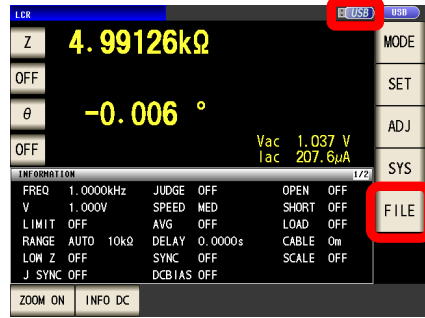


Fig.9

4. Use [▲][▼] button to select the [SETTING] folder and touch [SELECT] button (See Fig. 10).



Fig.10

5. Use [▲][▼] button to select the folder that is saved in ①, and touch [SELECT] button (See Fig. 11).

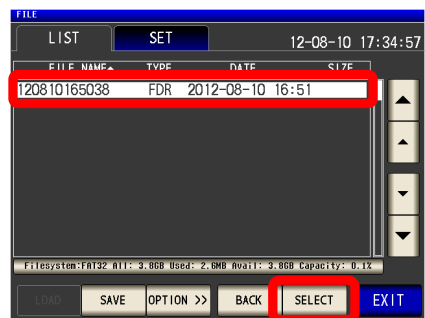


Fig.11

6. Use [▲][▼] button to select [TYPE] to [ALL] file and touch [ALL LOAD] button (See Fig. 12).

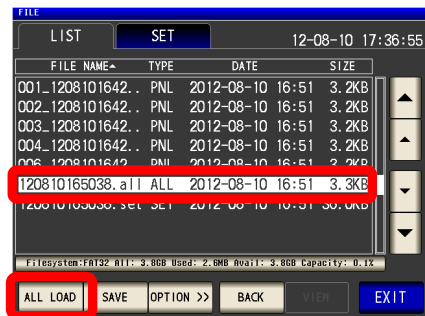


Fig.12

7. Touch the [LOAD] button in the read confirmation screen See Fig. 13).

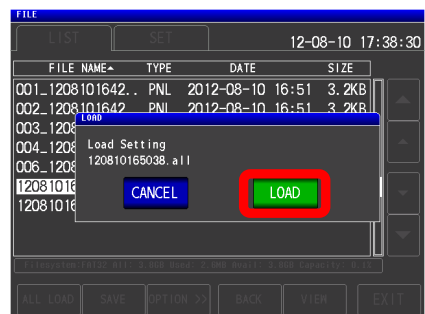


Fig.13

Loading all settings was completed.