

## Installation Instructions for the USB Driver(for PW3360/PW3365)

### Table of Contents

1. USB Driver Installation Instructions	1
• On WindowsVista/7	3
• On Windows XP	4
2. Connecting the Device to the Computer	4
• On WindowsVista/7	5
• On WindowsXP	5
3. Uninstalling the USB driver	8
• On WindowsVISTA/7	8
• On WindowsXP	9
4. Viewing the COM Port Number	10
• On WindowsVISTA/7	10
• On WindowsXP	11

### 1. USB Driver Installation Instructions

Note: The installer must be run with Administrator rights.

#### 1 Execute [HiokiUsbCdcDriver.msi]

Note: Depending on the environment, the dialog box may take some time to appear so please wait till it does so.

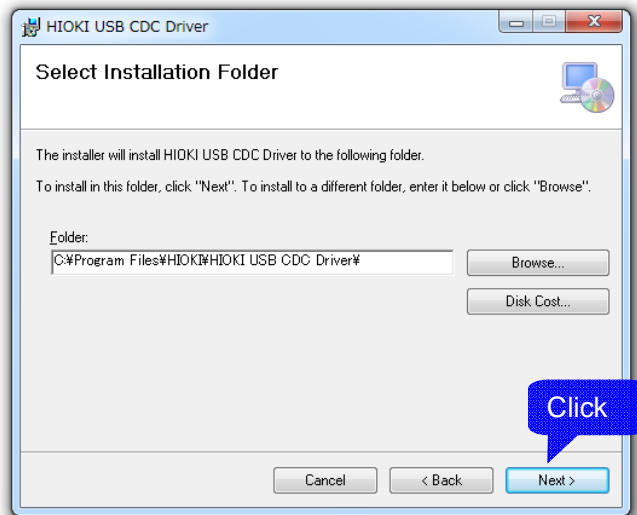
#### 2. Click [Next].



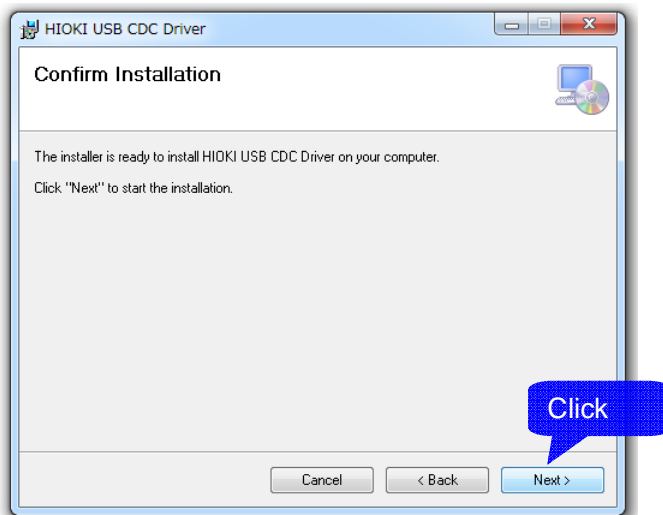
3. Click [Next].

If you want to change the installation folder, click [Browse...] and change the installation folder.

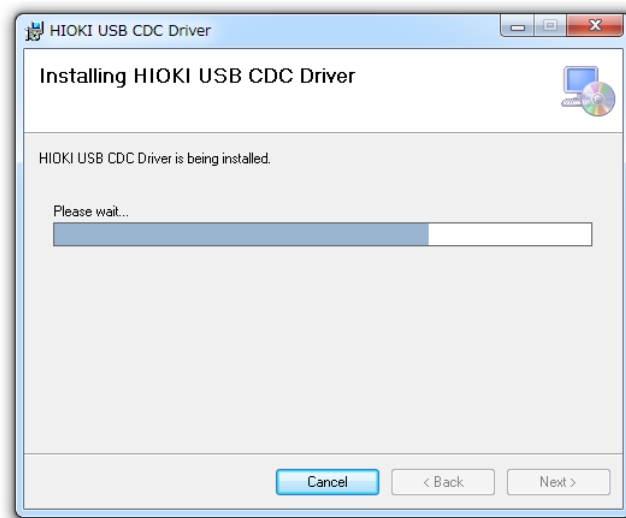
Normally this folder does not need to be changed.



4. Click [Next] to start the installation.

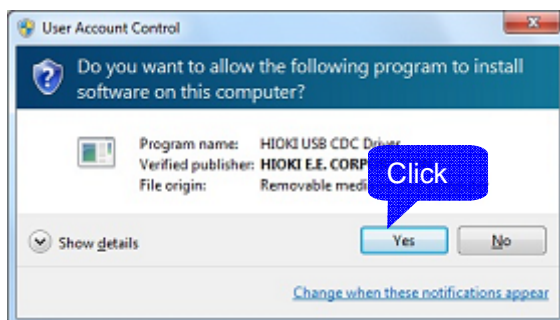


The installation begins.



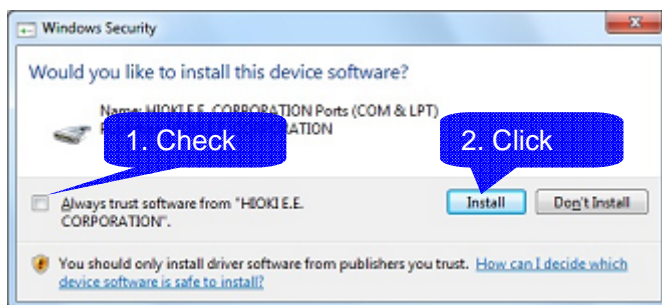
• On Windows Vista/7

When a dialog box requesting your permission to continue the program appears, click [Yes].



Sometimes another dialog box requesting your permission to install the software may appear.

When it does, check [Always trust software from "HIOKI E.E. CORPORATION"] and click [Install] to continue.

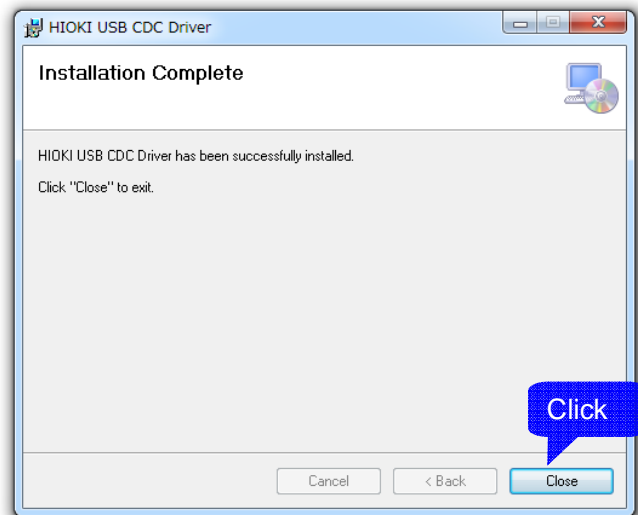


- On Windows XP

You may receive a popup message saying that this software is not authorized by Microsoft, but this is normal. Click [Continue] to continue.

5 When installation is completed and the dialog box appears, click [Close] to exit.

This completes the driver installation.



## 2. Connecting the Device to the Computer

Compatible Computers: Windows XP / Windows Vista (32-bit) / Windows 7 (32/64-bit)

Be sure that all the latest service packs are installed.

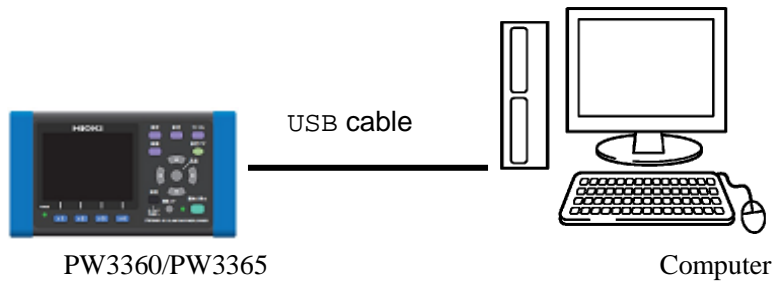
Caution:

- To prevent malfunction, do not unplug the USB cable while it is in use.
- Keep the device and the computer on the same ground. If they are connected to different grounds, this will cause a difference in potential between the computer ground and the device ground. If you connect the USB cable when there is a difference in potential like this, unexpected operations or malfunction may result.

Note: If the USB cable is connected when both the device and the computer are turned OFF, always turn the power to the computer ON first. If you do not, the device may not be able to communicate with the computer.

1. Connect the device to the computer where you are going to install the drivers.

2.



The first time you connect the instrument and computer, perform the following procedure to enable the computer to recognize the instrument.

- On WindowsVista/7

The instrument is recognized automatically, and the preparation to use the device completes.

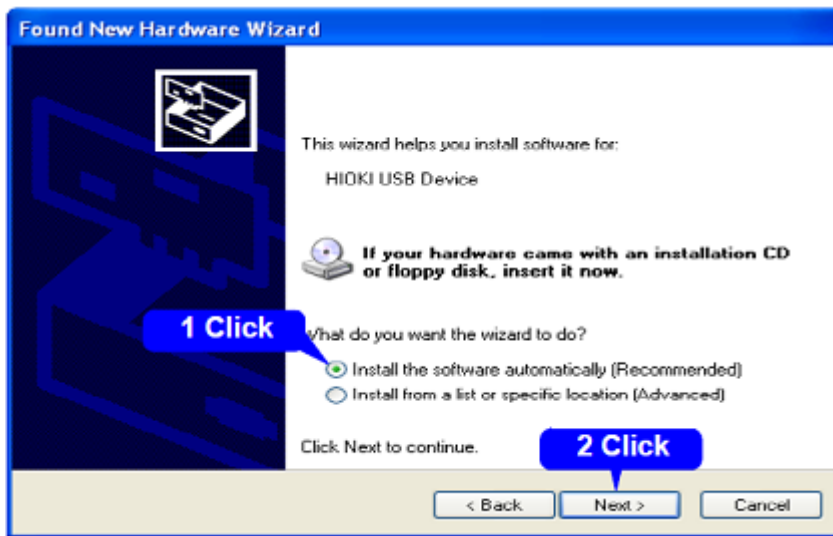
- On WindowsXP

A [Found New Hardware Wizard] dialog box will appear and the new hardware detection wizard will begin.

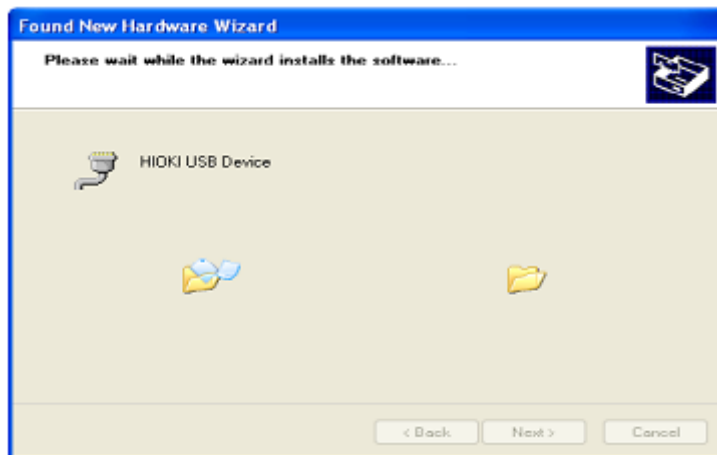
1 Check [No, not this time] and click [Next].



2 Check [Install the software automatically (Recommended)]

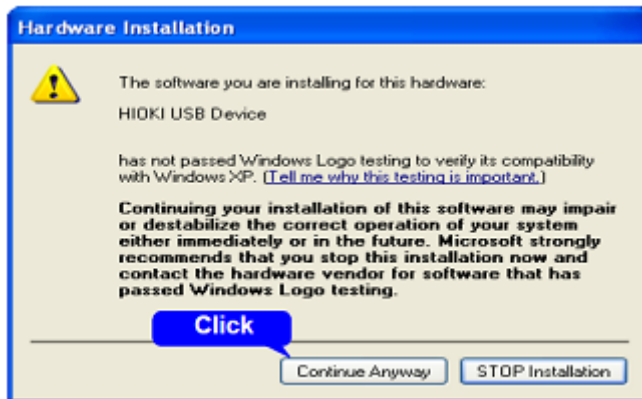


Please wait while the driver is being installed.



3 Click [Continue Anyway].

A message saying that the software has not passed Windows Logo testing will appear a few times, click [Continue Anyway] to continue installing.



4 When installation is completed and the dialog box appears, click [Finish] to exit.

This completes the driver installation.

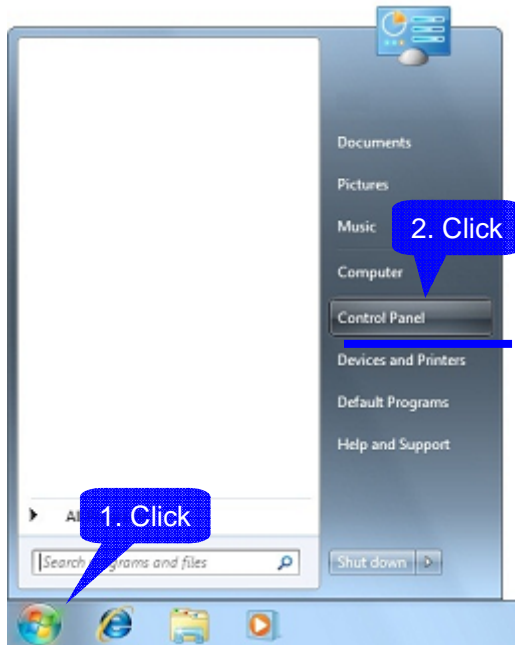


### 3. Uninstalling the USB driver

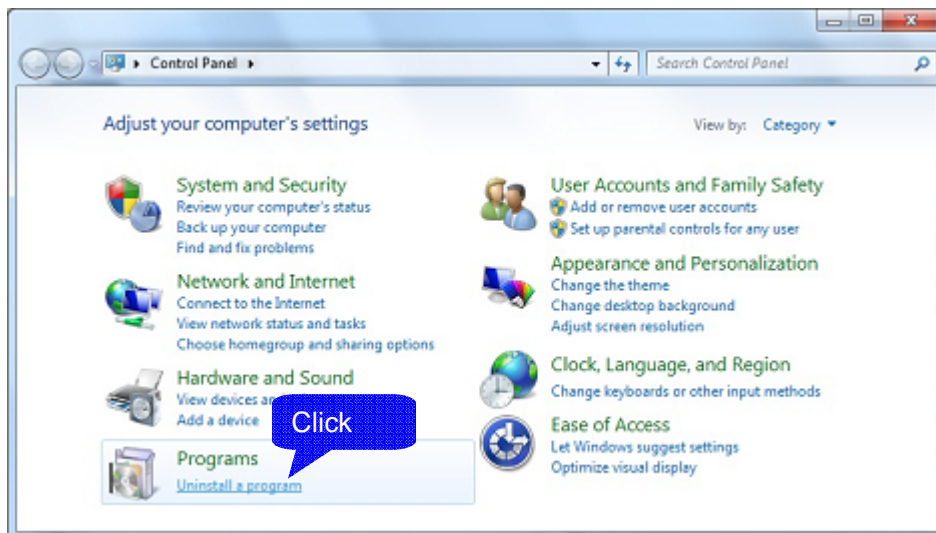
When the USB driver is no longer needed, uninstall it with the following procedure.

- On Windows VISTA/7

1. Select [Control Panel] from the Start Menu.

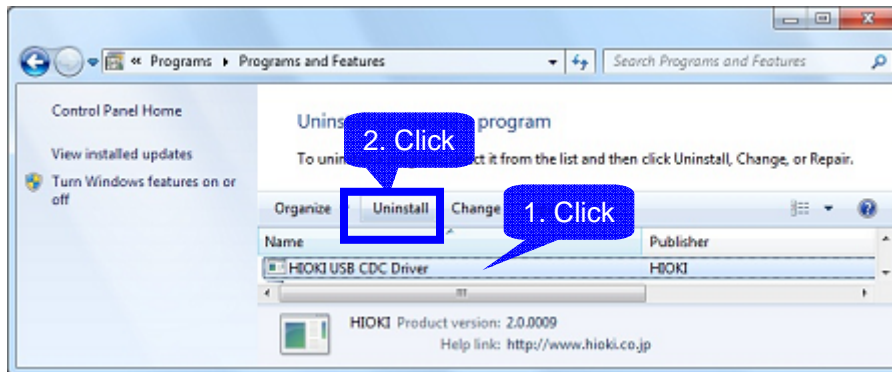


2. Double-click [Uninstall programs].

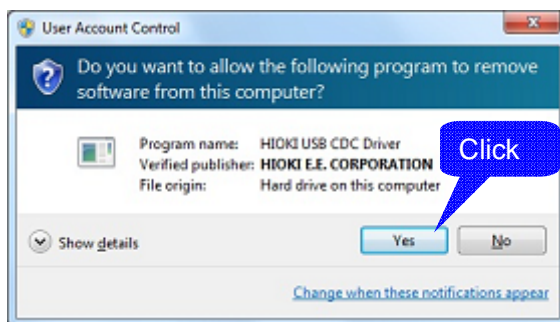




3. Select [HIOKI USB CDC Driver] from the list of installed programs, then click [Uninstall].

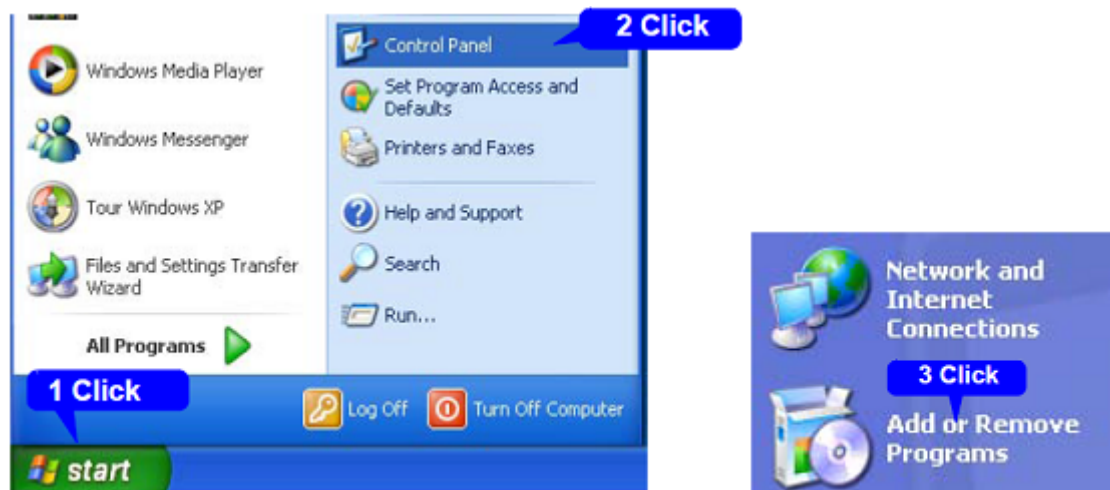


If a dialog appears asking if you want to continue execution, click [Yes] to continue.



- On WindowsXP

1 From the Windows Start menu, select the [Control Panel], and double click [Add or Remove Programs].

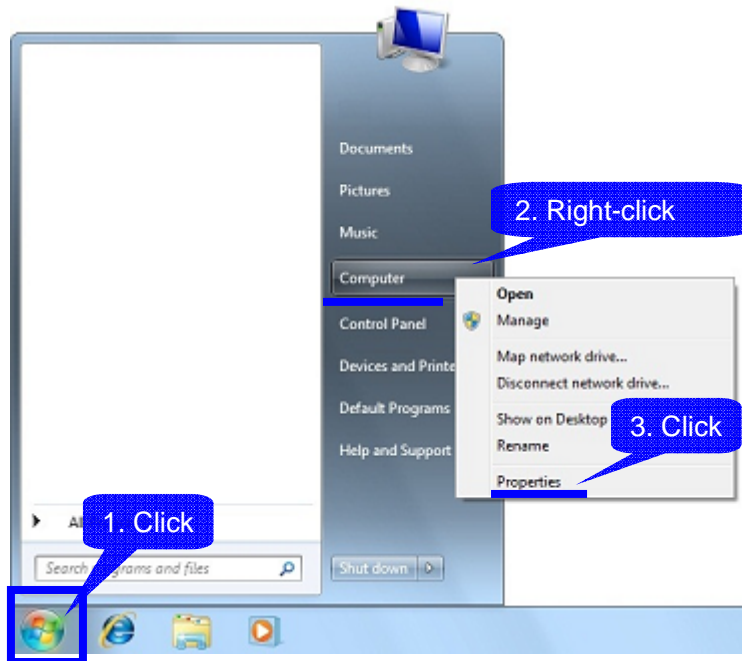


2 From the list of installed programs, select [HIOKI USB CDC Driver], and remove it. You are returned to the [Add or Remove Programs] screen.

#### 4. Viewing the COM Port Number

- On Windows VISTA/7

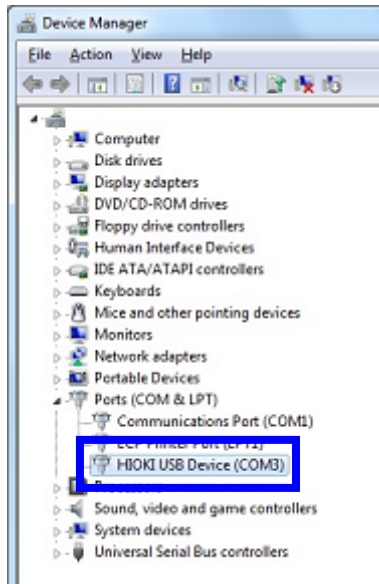
1. Right-click on [Computer] in the Windows Start Menu and select [Properties] from the menu.



2. Select [Device Manager].



3. Click Ports (COM & LPT), then look at the COM number for the HIOKI USB Device. In the example image shown here, the COM number is 3.



- On WindowsXP

- 1 Right-click on [Computer] in the Windows Start Menu and select [Properties] from the menu.
- 2 Select [Device Manager] from the [Hardware] tab page.
- 3 Click Ports (COM and LPT), then look at the COM number for the HIOKI USB Device.

Installation Instructions for the USB Driver(for PW3360/PW3365)

Published February, 2014, Revised Edition 1

Edited and Published by HIOKI E.E. CORPORATION, Technology 4 Section

HIOKI E.E. Corporation

• Headquarters

81 Koizumi, Ueda, Nagano 386-1192, Japan

TEL +81-268-28-0562 FAX +81-268-28-0568 E-mail:os-com@hioki.co.jp

URL <http://www.hioki.com/>

(International Sales and Marketing Department)

• HIOKI USA CORPORATION

6 Corporate Drive, Cranbury, NJ08512, USA

TEL +1-609-409-9109 FAX +1-609-409-9108 E-mail:hioki@hiokiusa.com

URL <http://www.hiokiusa.com>

• HIOKI (Shanghai) Sales & Trading Co.,Ltd.

1608-1610, Shanghai Times Square Office 93 Huaihai Zhong Road Shanghai,P.R.China

POSTCODE:200021

TEL +86-21-63910090 FAX +86-21-63910360 E-mail:info@hioki.com.cn

URL <http://www.hioki.cn>

• HIOKI INDIA PRIVATE LIMITED

Khandela House, 24 Gulmohar Colony Indore 452 018 (M.P.), India

TEL +91-731-6548081 FAX +91-731-4020083 E-mail:info@hioki.in

URL <http://www.hioki.in>

• HIOKI SINGAPORE PTE. LTD.

33 Ubi Avenue 3, #03-02 Vertex Singapore 408868

TEL +65-6634-7677 FAX +65-6634-7477 E-mail:info@hioki.com.sg

- ✓ The contents of this manual may be changed at any time without prior notice.
- ✓ The unauthorized reproduction, copy, or modification of this manual without consent is prohibited.
- ✓ Microsoft and Windows is a registered trademark of Microsoft Corporation in the United States of America.