

The procedure below is for Models MR8847-51, MR8847-52, and MR8847-53.
To install the USB driver on other models, refer to the instruction manual of each model.

16.6 Configuring the USB Settings and Connecting the Instrument to the Computer (Before Performing Command Communications)

Connecting the instrument and the computer to each other with the USB cable, supplied with the instrument, allows you to control the instrument from the computer.
Before performing command communications, configure the USB settings and establish the connection.

16.6.1 Configuring the USB Settings With the Instrument

Procedure

To display the screen

Press the **SYSTEM** key to display the system screen, and then select the **[Interface]** sheet.

Move the cursor to the **[Interface]** box, and select **[USB]**.

The **[USB Set]** setting is automatically set to **[Interface]**.

The figure shows two screenshots of the instrument's interface. The top screenshot shows a box labeled 'Interface' with a dropdown menu set to 'USB'. The bottom screenshot shows a box labeled 'USB Set' with a dropdown menu set to 'Interface'.

When the interface has been set to **[USB]**, the following functions are not available.

- Using a USB flash drive
- Viewing the data saved on the instrument with a computer

16.6.2 Installing the USB Driver

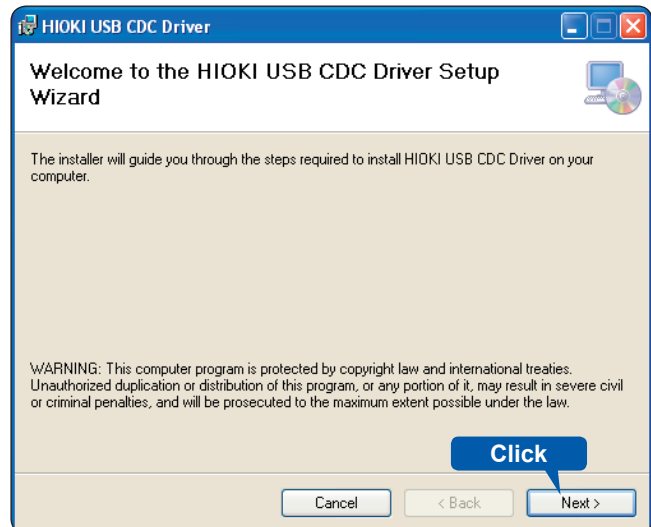
Before connecting the instrument via the USB interface, install the USB driver.

Log on to the computer with an administrator privilege to install the driver.

- 1 Run **[HiokiUsbCdcDriver.msi]** in the CD **X:\Driver** folder.
(**[X]** represents the CD-ROM drive. The letter will differ depending on your computer.)

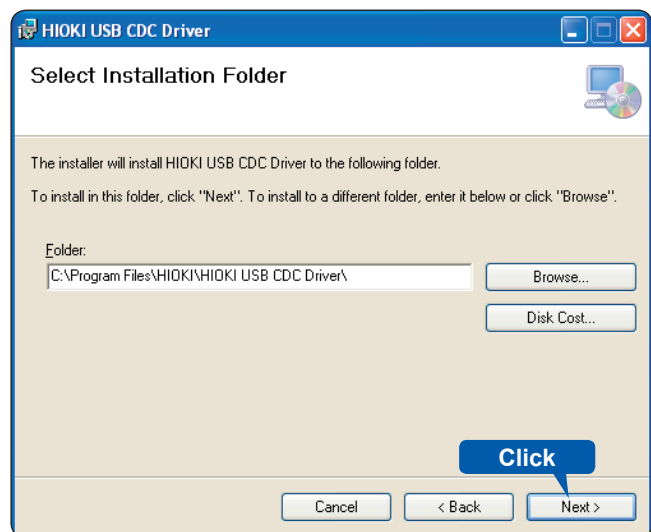
Depending on the environment, it may take some time before the dialog box appears.

2 Click **[Next]**.

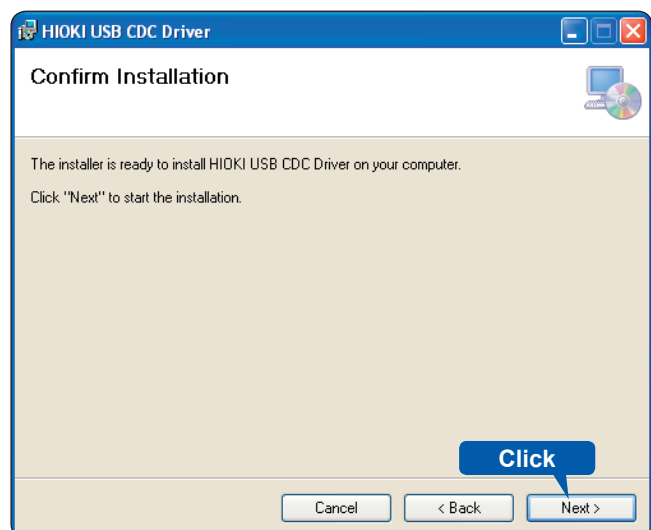


3 Click **[Next]**.

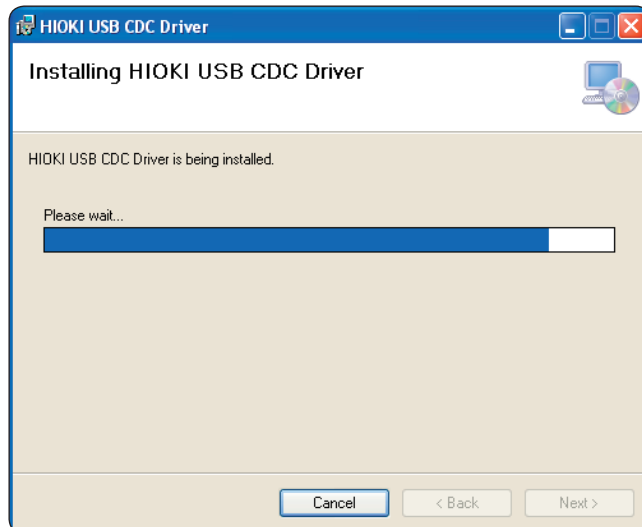
To change the installation destination
Click **[Browse...]** to change the driver installing folder.
Normally, there is no need to change.



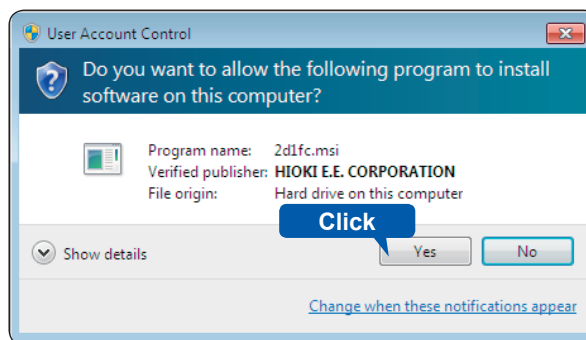
4 Click **[Next]**.



The installation starts.

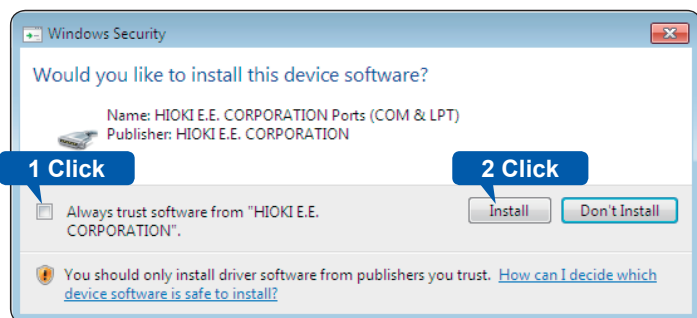


When the dialog box requesting your permission to continue the installation appears, click **[Yes]**.



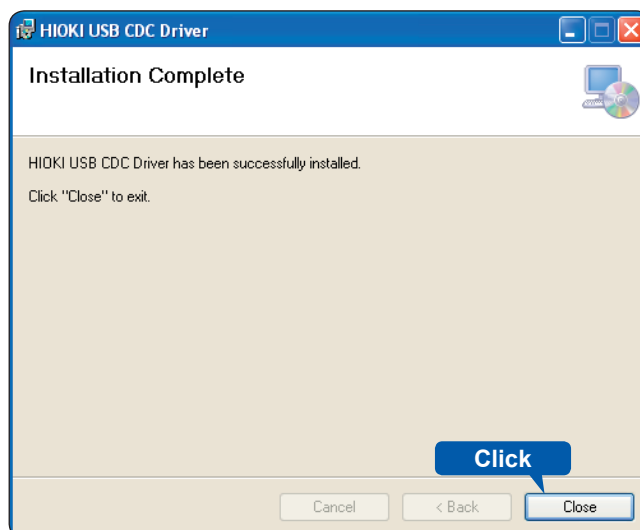
Sometimes another dialog box requesting your permission to install the software may appear.

When it appears, select **[Always trust software from "HIOKI E.E. CORPORATION"]** check box and click **[Install]** to continue the installation.



5 When the dialog box appears on completion of the installation, click **[Close]** to exit it.

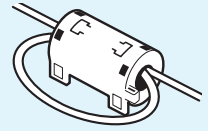
This completes the driver installation.



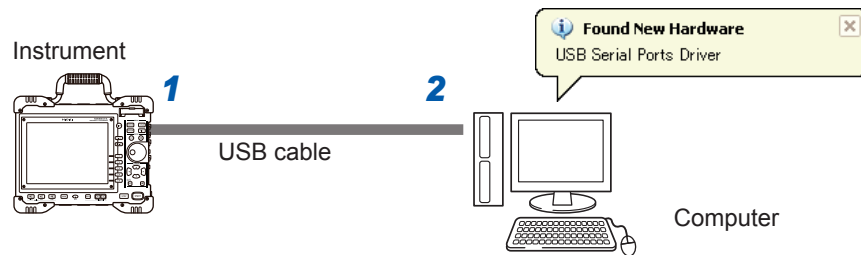
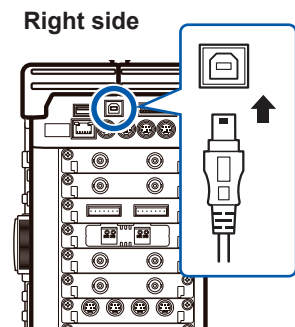
Connecting the Instrument to the computer on which the driver is installed

System requirements: The computer running Windows Vista®, Windows 7, or Windows 8

- If you connect the USB cable while both the instrument and the computer are turned off, be sure to turn on the computer first. If you turn them on in the wrong order, the instrument and computer cannot communicate with each other.
- If noise emitted from the USB cable affects other equipment in the vicinity, wind the USB cable once around the supplied ferrite clamp-on choke (for LAN/USB cable), as shown in the illustration on the right.



- 1** Plug the USB cable supplied with the instrument into the USB connector (Type B) on the right side of the instrument.
- 2** Connect the other end of the cable to a USB port on the computer.



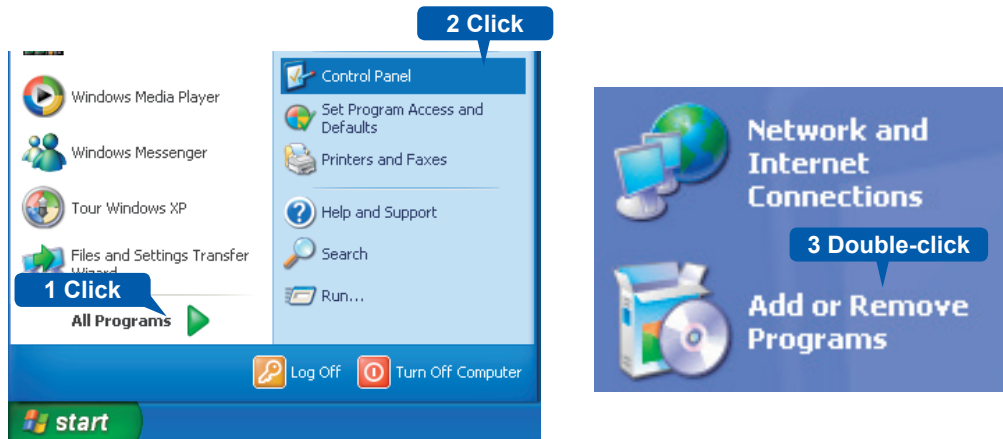
The instrument will be recognized, and the device is ready to use automatically.

Uninstalling the USB Driver

When the USB driver is no longer needed, uninstall it by following the procedure below.

- 1 Click the **Start** button of Windows®, and then on the **Start** menu, click **[Control Panel]**. The **Control Panel** window appears. Double-click **[Add or Remove Programs]**.

The **[Add or Remove Programs]** screen appears.



- 2 On the list of installed programs, select **[HIOKI USB CDC Driver]** and remove it. You will be returned to the **[Add or Remove Programs]** screen.