

# PW8001 Data Receiver user's manual

## 1.Introduction

“PW8001 Data Receiver” is an application software to save the measurement data calculated by HIOKI PW8001 power analyzer on PC.

Supported models	Product name
PW8001	Power Analyzer

PW8001 Data Receiver can do the following.

- Save measurement data to PC in CSV format
- Remote control of the PW8001 instrument from PC

## 2.System Requirements

The following systems must be installed on your computer to use PW8001 Data Receiver.

### Minimum System Requirements

Operating system	Windows 11, Windows 10 (64-bit edition) Version 21H2 or later
CPU	Intel ® Corei3 or higher or equivalent processor
Memory	4GB or more
Storage	250GB or more
Display	Display High-definition (1366 x 768) or higher
Communication Interface	LAN
Input device	Keyboard, Mouse, Touch devices

### Recommended System Requirements

Operating system	Windows 11, Windows 10 (64-bit edition) Version 21H2 or later
CPU	Intel ® Corei7 or higher or equivalent processor
Memory	8GB or more
Storage	SSD 500GB or more
Display	Full high definition (1920 x 1080) or higher
Communication Interface	LAN
Input device	Keyboard, Mouse, Touch devices

### PW8001 Requirements

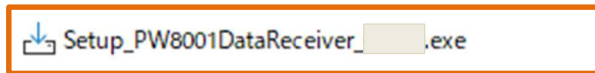
Firmware version number	V1.61 or later
-------------------------	----------------

### 3.Installation

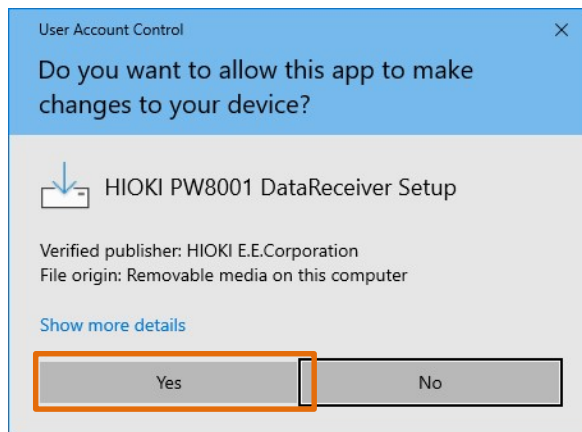
Delete the previous version of the “PW8001 Data Receiver” folder, folder by folder. If you have created a shortcut icon on the desktop, delete the shortcut icon as well.

Perform the following steps using an administrator account.

- 1. Double-click on [Setup\_PW8001DataReceiver\_x.xx.x.exe]



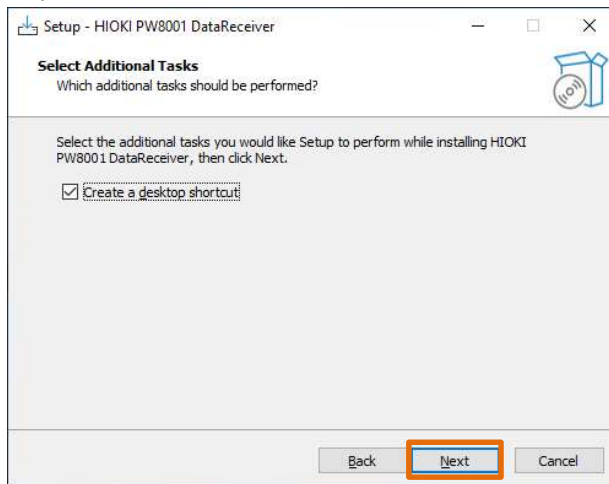
- 2. Another warning message will appear. Click “Yes” to agree to add changes to the device.  
(This message may not appear depending on previously made settings.)



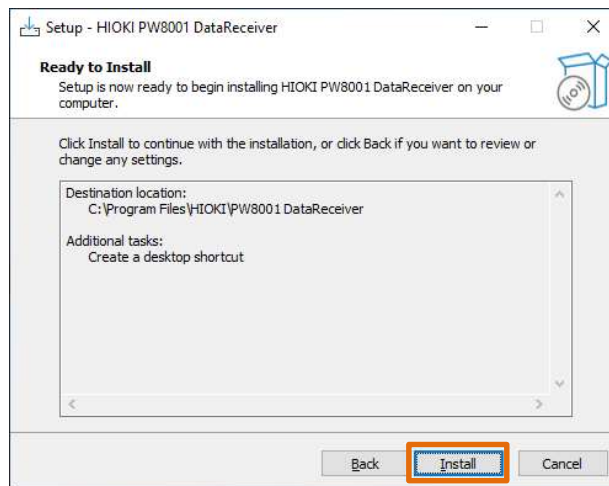
- 3. The Welcome screen will appear, and click on "Next."



-4. Verify that the check boxes are activated as shown below, and click “Next”.



-5. Click “Install”.



-6. When the following dialog window is displayed, click “Finish”.



-7. Installation is completed.

## 4.Using the Software

### 4.1. Setting up the PW8001 instrument

Before starting the application, please set up the PW8001 instrument.  
The PW8001 instrument wiring can be set as desired.

### 4.2. Connection between PW8001 and PC

Connect the PC to the PW8001 instrument via LAN.

**\* Firmware version v1.61 or later is required for the PW8001 instrument.**

### 4.3. Launching the Application

To start the application, click on "HIOKI" - "HIOKI PW8001 DataReceiver" from the Start menu.



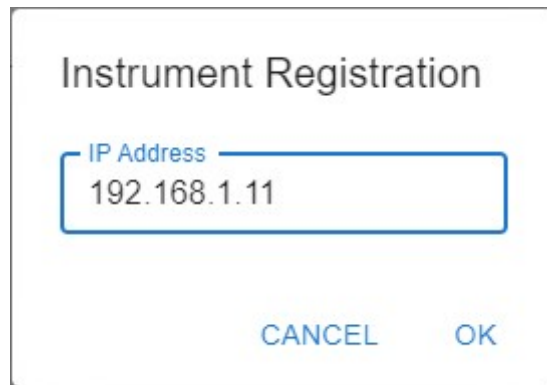
#### 4.4. How to connect to PW8001

- First, make a communication connection between the PW8001 instrument and the PC.
- Double-click on the line under IP Address to display the configuration dialog.



Set the IP address of the PW8001 instrument.

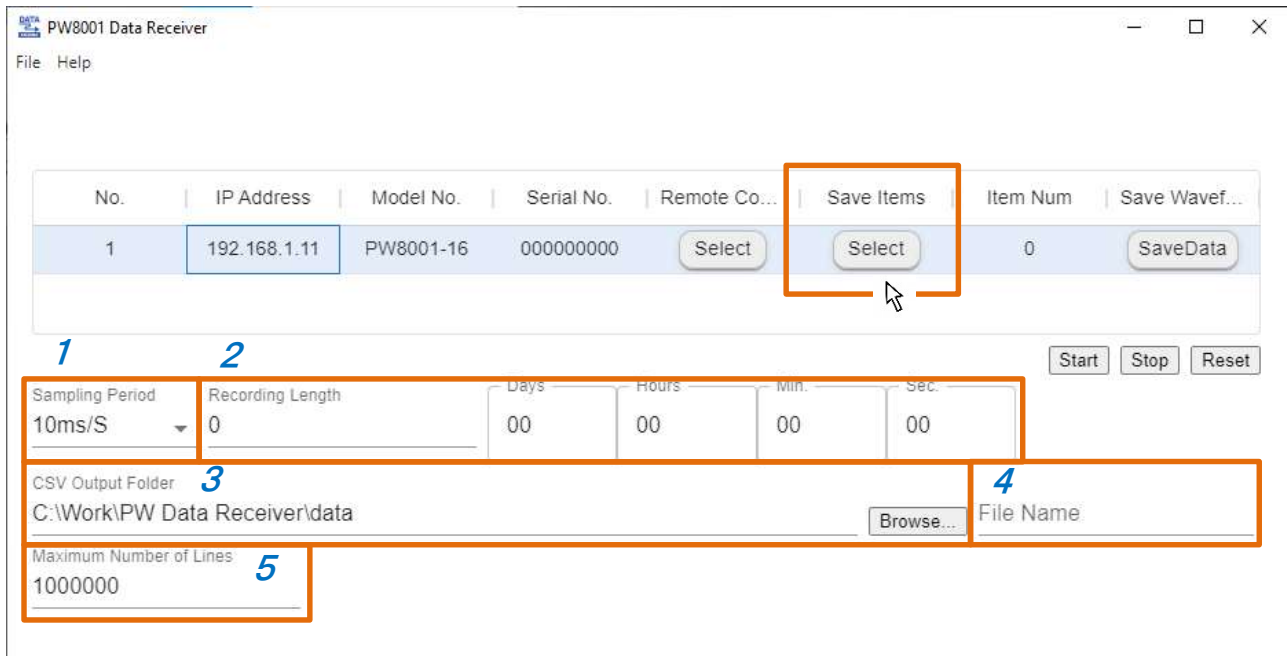
\*For details on how to recognize the IP address of PW8001, refer to the user's manual of PW8001.



- If the connection is successful, the Model No. and Serial No. information of the recognized PW8001 will be displayed.

## 4.5. Measurement data storage settings

Sets the measurement data storage settings.



	Item	Description
1	Sampling Period	<p>Set the recording interval.</p> <p>Selectable range: 1ms/S, 10ms/S, 50ms/S, 100ms/S, 200ms/S, 500ms/S, 1s/S, 2s/S, 5s/S, 10s/S, 30s/S, 1min/S</p> <p>The maximum number of items that can be measured depends on the recording interval.</p> <p>1ms/S : Max. 50ch (Harmonic measurement items are not selectable.)</p> <p>10ms/S : Max. 500ch</p> <p>50ms/S : Max. 2,500ch</p> <p>100ms/S : Max. 5,000ch</p> <p>200ms/S or later: Max. 10,000ch</p>
2	Recording Length	<p>Sets the record length of the measurement.</p> <p>You can configure the data recording time for both the number of points and duration.</p> <p>If 0 point is specified, the measurement is continuous.</p> <p>Maximum recording time is 10 days.</p>

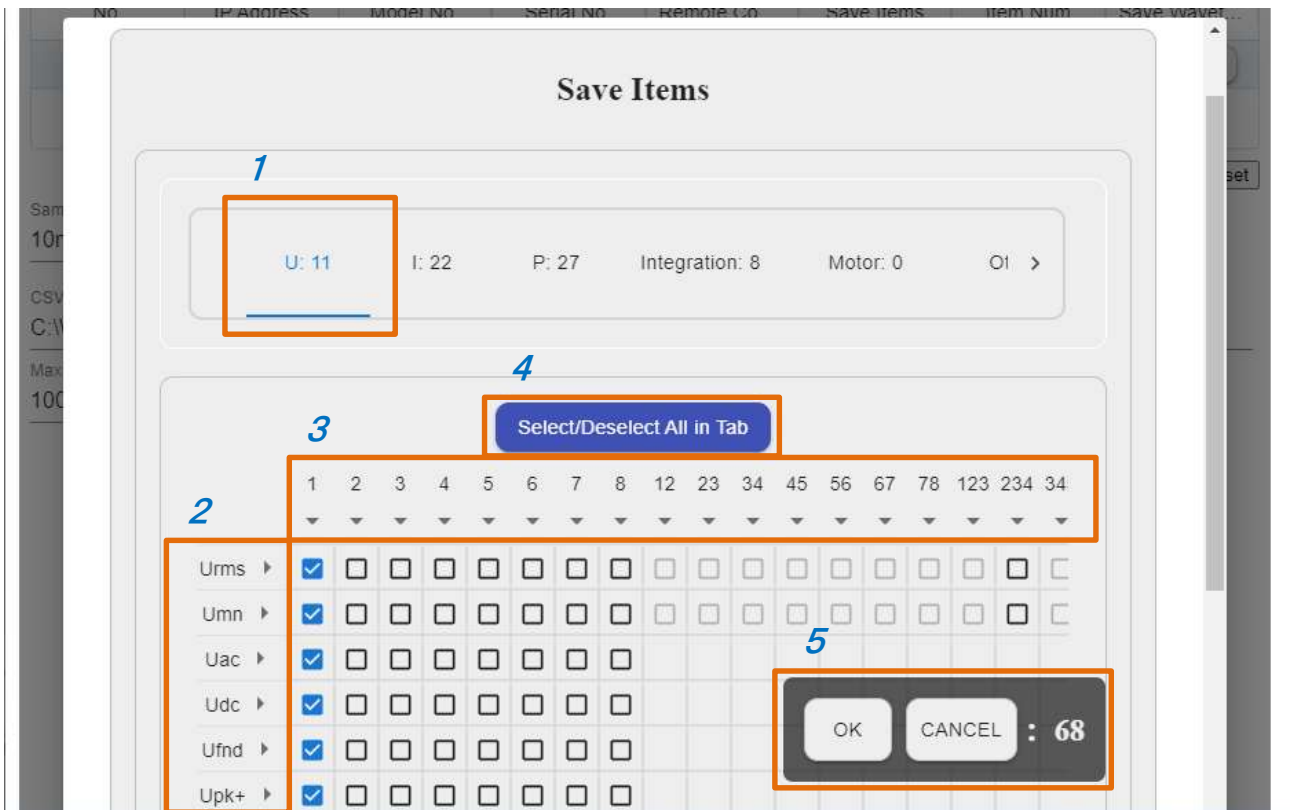
3	CSV output folder	<p>Specify the folder for CSV output.</p> <p>Press the [Browse...] button to specify the folder.</p> <p>* Please create the folder you wish to specify in advance before entering a folder name.</p>
4	File Name	<p>Specify the name of the CSV output file.</p> <p>A number representing a sequential number will be added to the name entered here.</p> <p>Example: If the file name is "name", the output file name is "name_1.csv".</p>
5	Maximum number of lines	<p>Set the maximum number of lines in the CSV output file.</p> <p>If the maximum number of lines is exceeded, the file will be split.</p> <p>Range: 1,000 – 1,000,000 lines</p>

\* Regarding the specified recording length, we guarantee normal operation for a maximum of 72 hours. Within this range, you can expect stable performance and proper functionality.

If longer usage exceeding 72 hours is required, please proceed at your own responsibility.

Next, set the measurement items to be saved.

Click the "Select" button to open the Save Item Selection window.



	Name	Description
1	Save Item Type Tab	<p>This tab classifies the type of stored items.</p> <p>U: Voltage measurement items</p> <p>I: Current measurement items</p> <p>P: Power measurement items</p> <p>Integration: Integration measurement items</p> <p>Motor: Motor analysis measurement items</p> <p>Others : Other measurement items</p> <p>Harmonic: Harmonic measurement items</p> <p>Flicker: Flicker measurement item (*1)</p> <p>Interharmonics: Intermediate harmonic measurement item (*1)</p> <p>*1: Displayed only in IEC measurement mode.</p> <p>The number to the right of each tab indicates the number of measurement items currently selected on that tab.</p>
2	Measurement item name	<p>This label indicates the name of the measurement item.</p> <p>For details, refer to "Detailed Specifications of</p>



		Measurement Parameters” in the instruction manual. Clicking the arrow to the right of a measurement item name allows you to select all the checkboxes in that line at once.
3	CH name	This label indicates the CH name. Clicking the arrow under a CH name selects all the checkboxes in that column.
4	Select/deselect all in tabs	All checkboxes in the currently selected tab are selected or deselected.
5	OK / CANCEL	After selecting the items to be stored, press the OK button to determine the items to be saved and close the window. Pressing the Cancel button returns the window to the state it was in before it was opened and closes it. The number on the right indicates the number of all the currently selected measurement items.

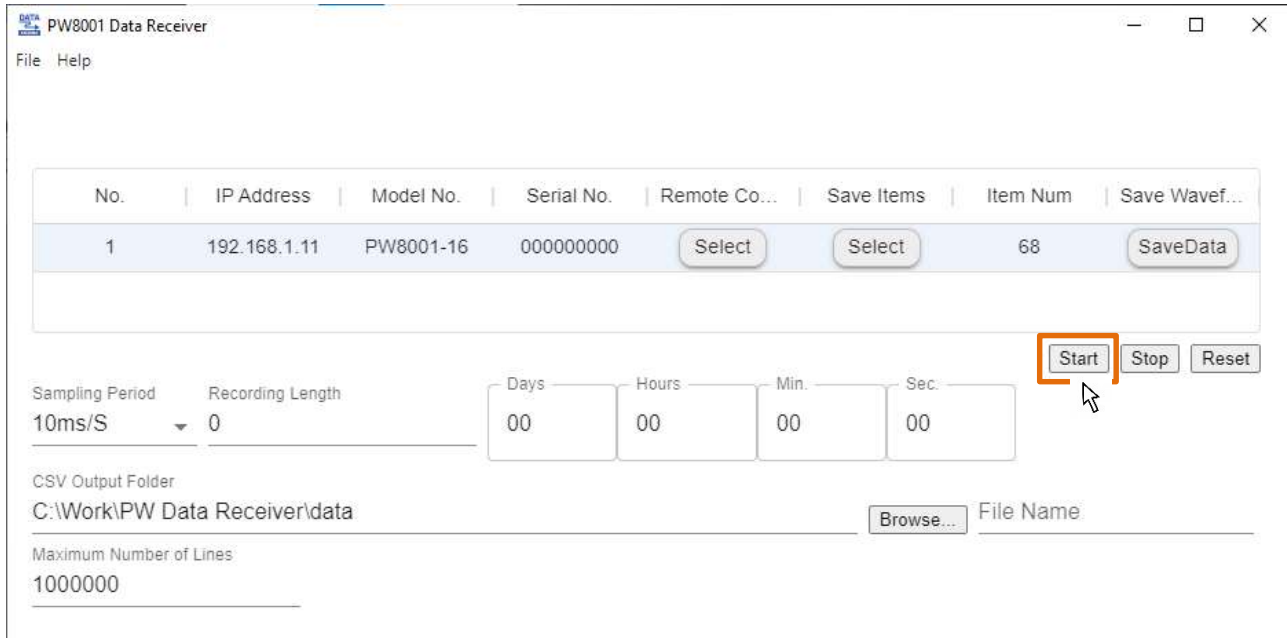
Note

The measurement items that can be saved change depending on the measurement mode, wiring settings, and channel settings. After selecting an item to save, do not change the setting and start measurement. Also, be sure to select the save item again after changing the setting.

## 4.6. Start the measurement

Click the "Start" button to start measurement.

Do not stop or reset the integration by operating the instrument during measurement.



Item	Description
Start	Press this button to start measurement.
Stop	Press this button to pause measurement. The next time measurement is started, and the result is appended to the previous CSV file.
Reset	Resets the measurement. The next time measurement is started, the result is output to a new CSV file.

### Note

In IEC measurement mode, restarting measurement after it has been stopped will result in an error. Reset once and then start measurement.

## 4.7. Saving CSV data

During the measurement, the data is automatically saved in CSV format.

CSV data will be saved in a folder created for the time when recording started under the folder specified in the "CSV Output Folder" setting.

Example: When recording started at 12:34:56 on 09/31/2023, the data will be saved in the folder "20230931123456".

\* When you resume the measurement, it will be appended to the same file. However, if you have the CSV file open in Excel or any other application, the file will be locked by Excel, preventing the application from writing to the file and causing an error. Please be careful not to have the CSV file open in Excel or any other application when starting the measurement.

### Note

When the measured value is in a specific state, a specific string is stored instead of the measured value.

Peak-over value	"OVER"	In case of overload or peak overload, "OVER" is stored to indicate the peak-over value.
Invalid value	"ERROR"	If the range is changed or calculation is not possible, an "ERROR" is stored to indicate an error value.

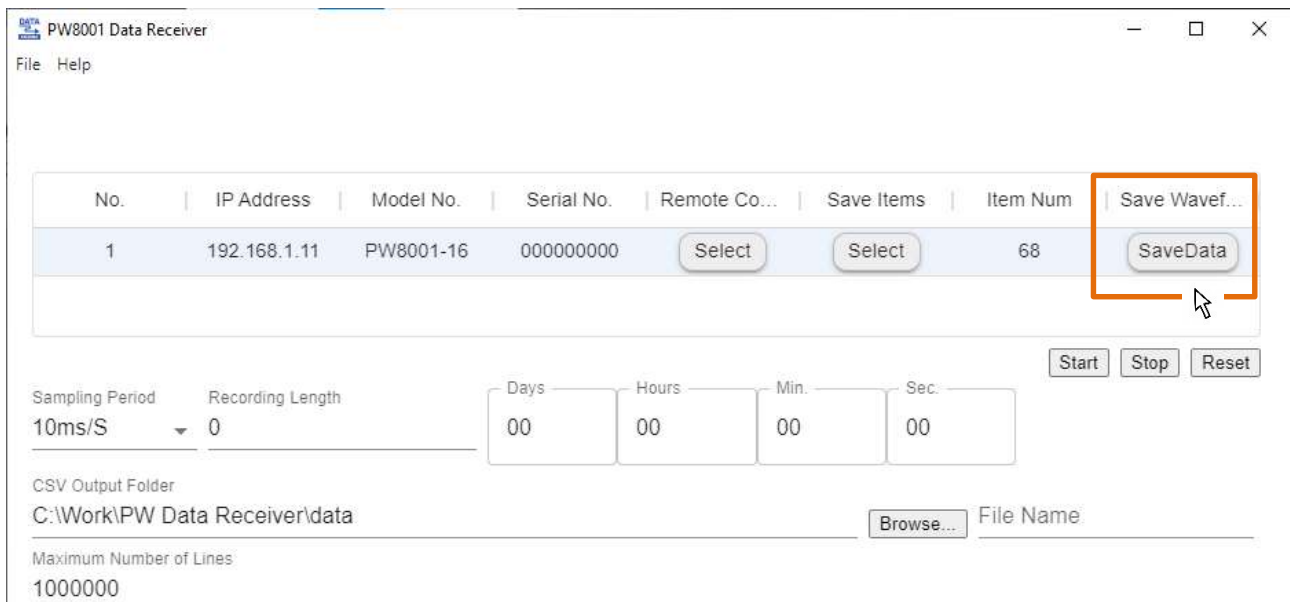
## 4.8. Saving waveform data

Save the waveform data currently displayed on the instrument by clicking the "Save" button in the "Save Waveform" section.

The waveform data will be saved in the "WAVEdata" folder under the folder specified in the "CSV Output Folder" and the data will be saved there.

If you are in continuous waveform recording mode, waveform saving will result in an error. Press the SINGLE key to record the waveform.

The saved data is stored as a BIN format file. Displayed by "GENNECT One", an application published by our company.



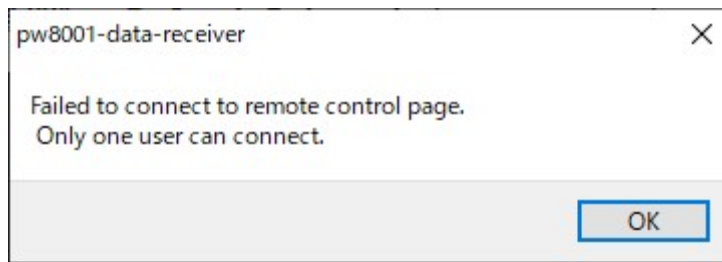
The screenshot shows the 'PW8001 Data Receiver' software window. The interface includes a menu bar with 'File' and 'Help'. Below the menu is a table with columns: 'No.', 'IP Address', 'Model No.', 'Serial No.', 'Remote Co...', 'Save Items', 'Item Num', and 'Save Wavef...'. The first row contains the values: '1', '192.168.1.11', 'PW8001-16', '000000000', 'Select', 'Select', '68', and 'SaveData'. The 'Save Wavef...' column and its 'SaveData' button are highlighted with an orange box. Below the table are controls for 'Sampling Period' (10ms/S), 'Recording Length' (0), and time units (Days, Hours, Min., Sec.) all set to 00. There are 'Start', 'Stop', and 'Reset' buttons. At the bottom, the 'CSV Output Folder' is set to 'C:\Work\PW Data Receiver\data' with a 'Browse...' button, and the 'Maximum Number of Lines' is set to '1000000'.

No.	IP Address	Model No.	Serial No.	Remote Co...	Save Items	Item Num	Save Wavef...
1	192.168.1.11	PW8001-16	000000000	Select	Select	68	SaveData

Sampling Period: 10ms/S  
Recording Length: 0  
Days: 00, Hours: 00, Min.: 00, Sec.: 00  
Start, Stop, Reset  
CSV Output Folder: C:\Work\PW Data Receiver\data  
Browse... File Name  
Maximum Number of Lines: 1000000

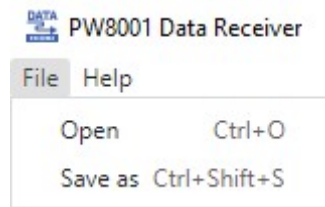


When you open the remote-control window, the dialog below may appear. However, the connection has been made; press OK to close the dialog.



#### 4.10. Saving and loading settings

Click on the [\[File\]](#) menu in the upper left corner of the screen to display the Open / Save as menu.

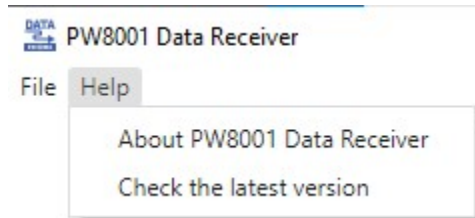


	項目	説明
1	Open	Open the app settings by specifying a JSON file.
2	Save as	Save the app settings to a JSON file.

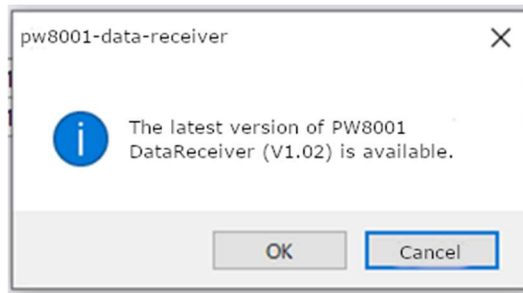
\* During measurement, pause, and waveform acquisition, you cannot perform the loading and saving of settings.

## 4.11. Checking the latest version

Click [File] in the upper left corner of the screen to display the menu.  
 Click [Check for Latest Version] in the menu.



When the latest version is released:



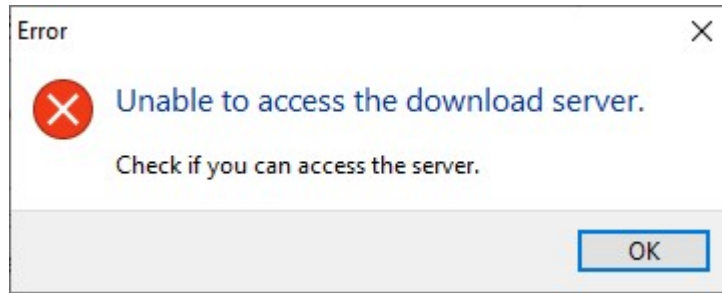
Click OK to start upgrading.

When the version was already up to date:



	Item	Description
1	Check for newer versions at startup.	By checking this checkbox, PW8001 Data Receiver will automatically check for the latest version release upon startup.

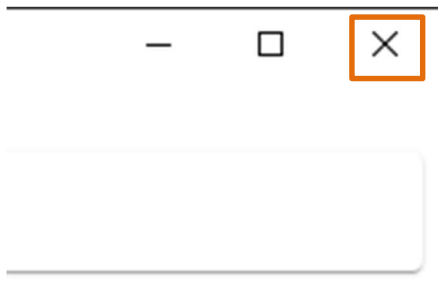
When not connected to the Internet:



An error dialog will appear. Please make sure you are connected to the Internet and execute again.

#### 4.12. Quitting the Application

Click [X] on the top right corner of the application window to quit the application.



... and upwards