



Sensor Data Setup Software(Hioki 3664 Setup Utility) User's Guide

Copyright (C) 2006–2011 HIOKI E.E. Corporation

[<<Contents>>](#)

1. Introduction
2. Driver Installation
3. Application Installation
4. 3664 Setup
5. Application Uninstall
6. Error Display

<<1. Introduction>>

When connecting a new sensor to the 3664 Optical Power Meter (hereafter referred to as the 3664), it is necessary to setup the 3664 using Hioki 3664 Setup Utility. The setup process is described below.

Note: Setup is required when you have connected a sensor to the 3664 but the 3664 screen displays "Err1" and measurement is not possible. If a measurement value is output then setup is not necessary.

If the 3664 is version 1.02 or later, you can confirm sensor data compatibility by turning on the power without connecting the sensor. If the version is 1.01 or earlier, sensor compatibility will not be displayed. (See the 3664 User's Guide for details.)

Hioki 3664 Setup Utility does not update the 3664's firmware. Only data setup will occur, and the 3664's version will not be upgraded.

1. Install the driver into your computer. (Not necessary if the driver is already installed)
→ Refer to <<2. Driver Installation>>
2. Install Hioki 3664 Setup Utility into your computer.
→ Refer to <<3. Application Installation>>
3. Connect the 3664 to your computer using a USB cable.
4. Perform setup of the 3664 using Hioki 3664 Setup Utility.
→ Refer to <<4. 3664 Setup>>
5. Disconnect the USB cable from the 3664 and computer.
6. Uninstall Hioki 3664 Setup Utility from your computer if it is not needed.
→ Refer to <<5. Application Uninstall>>

Recommended System Requirements	
Compatible OS	Windows 2000, Window XP, Windows Vista(32bit), Windows 7(32bit,64bit)
Disk space	At least 10 MB free space
Interface	USB Ver1.1 or higher
Display	1024x768 or higher resolution monitor

Windows is a registered trademark of Microsoft Corporation.

<<2. Driver Installation>>

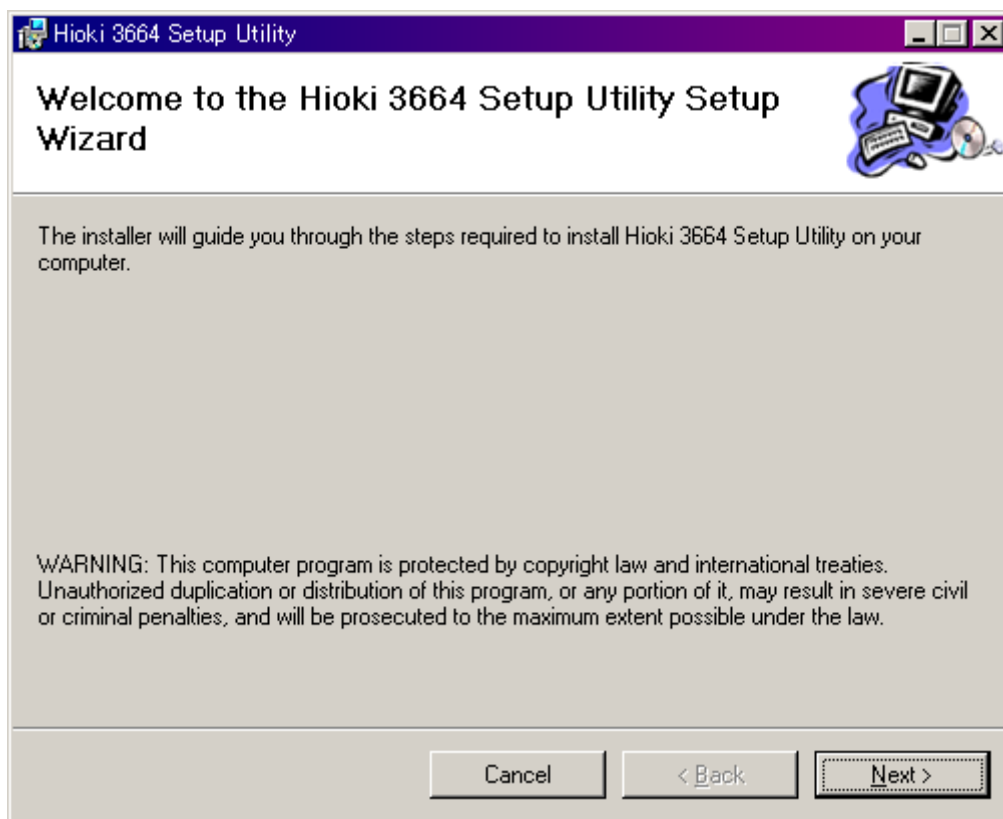
The driver must be installed to connect the 3664 to your computer via USB. Use the CD-R included with the 3664 about installing the driver. Refer to the 3664 User's Guide for details.

The driver can download it from the homepage.

<<3. Application Installation>>

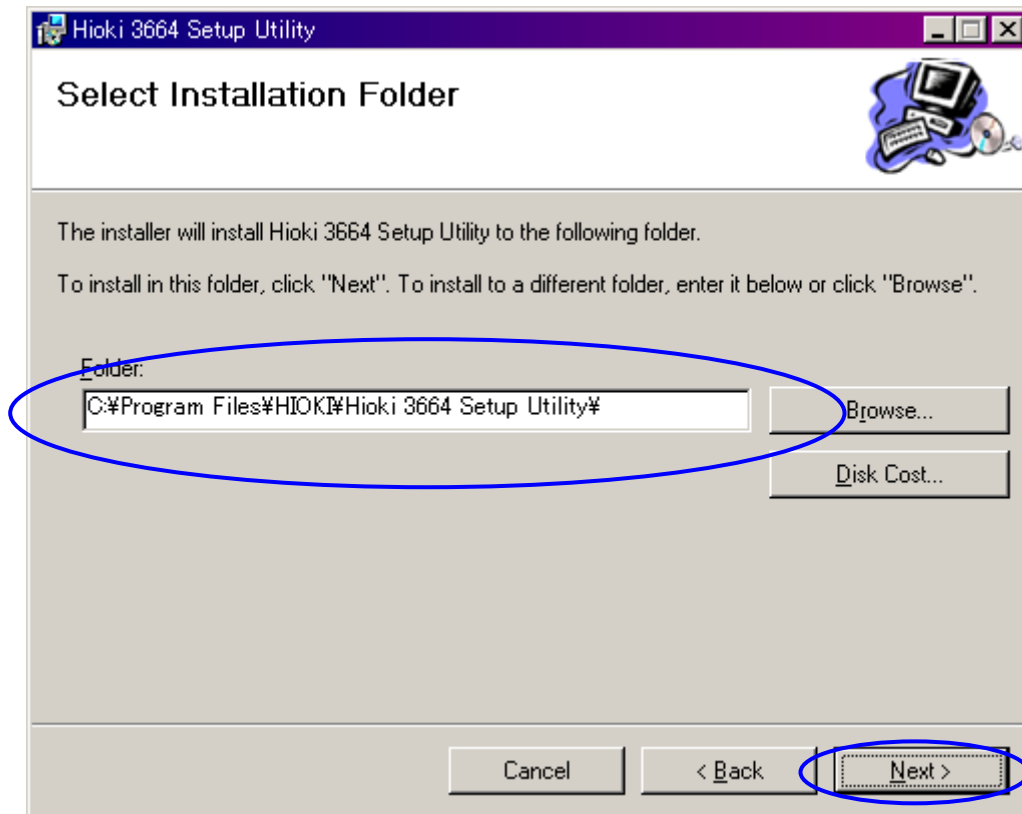
Perform the following steps to install the application onto your computer.

1. Close all applications currently running on your computer.
2. Open the setup.msi file in the extracted folder.
3. The installer will start up and the "Hioki 3664 Setup Utility Setup Wizard" screen will be displayed.

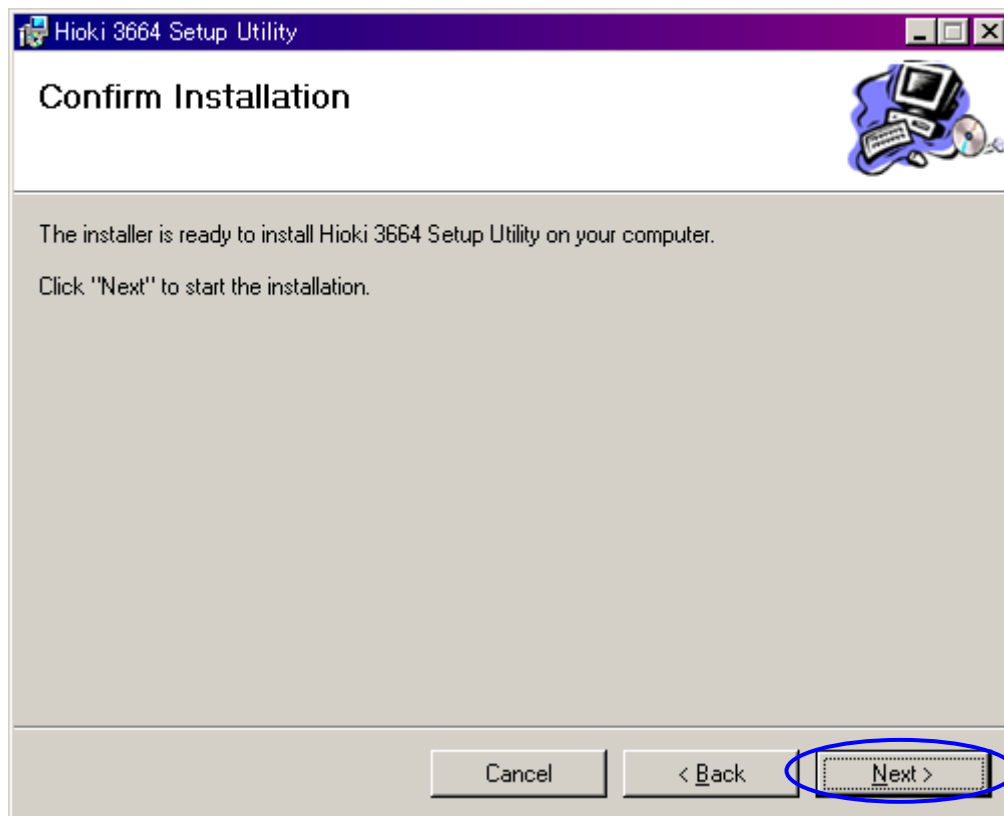


4. Click "Next".

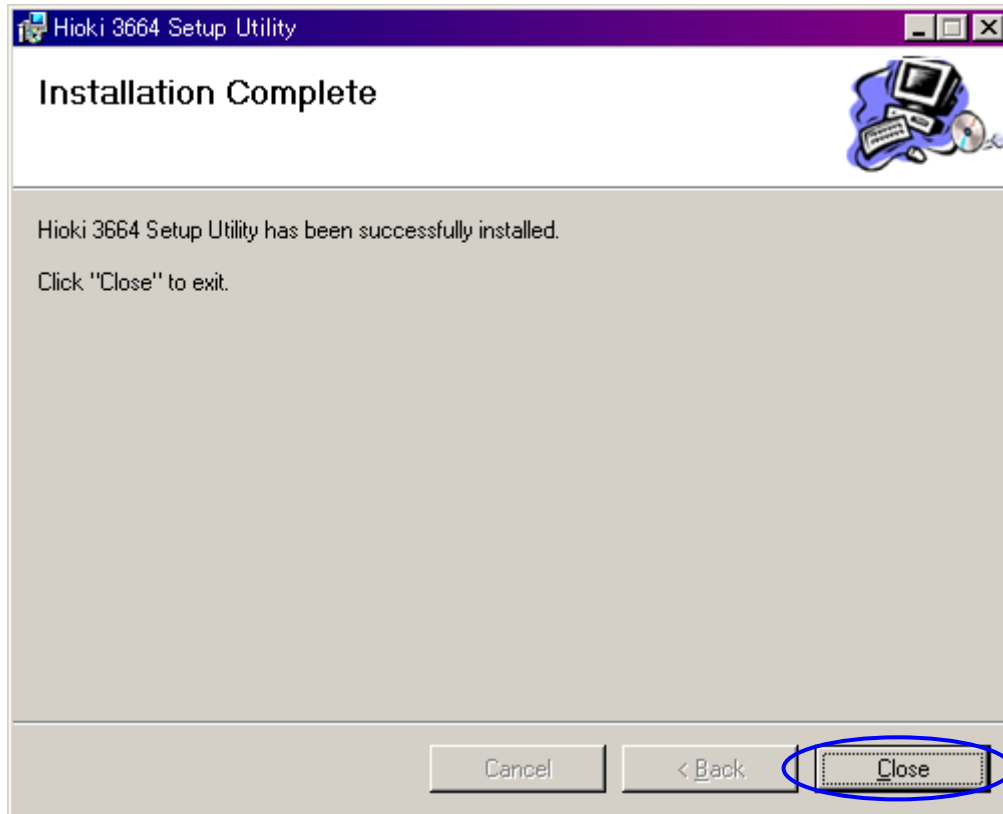
5. Select the installation folder and click "Next".



6. Click "Next".



7. Once installation is complete, click "Close" on the confirmation screen.



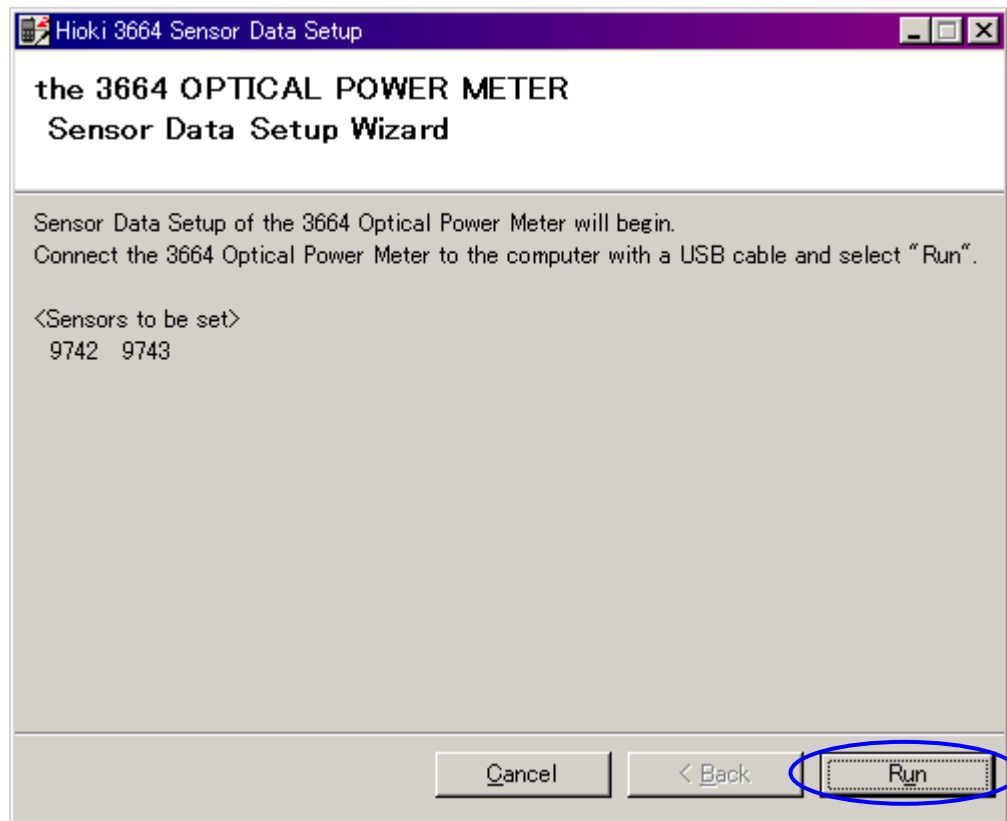
<<4. 3664 Setup>>

Complete the following steps to perform setup of the 3664.

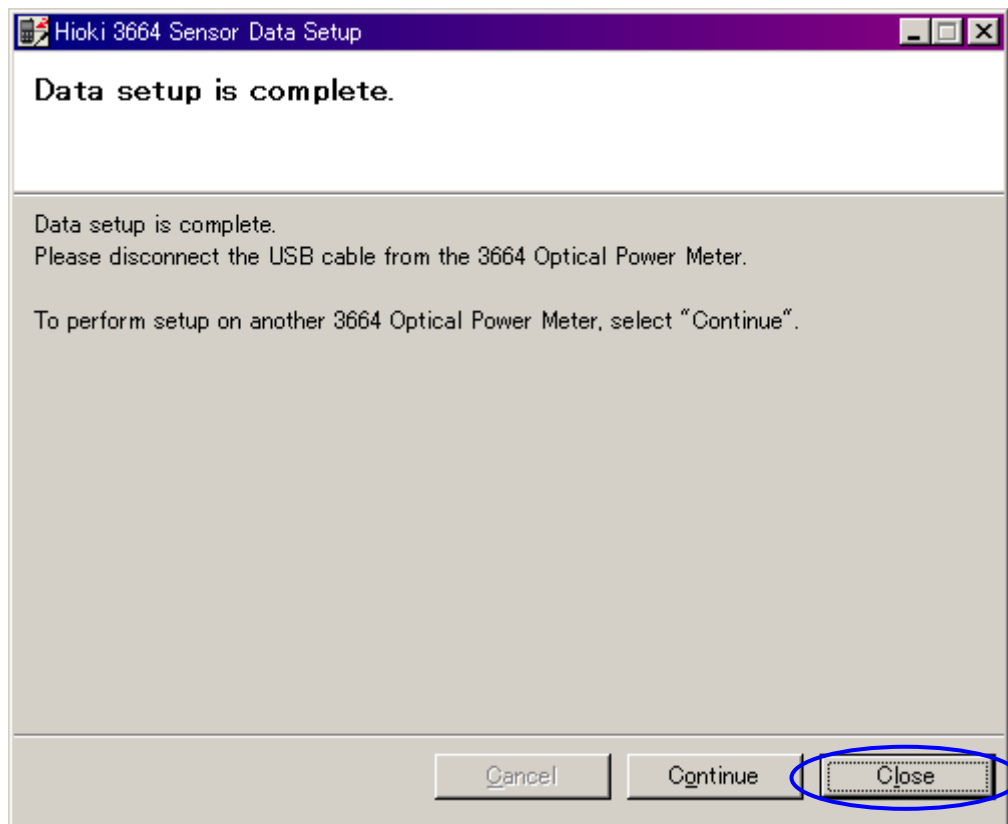
1. Start up the application.

Select Programs > HIOKI > 3664 > Hioki 3664 Setup Utility in the Windows Start Menu, or click the Hioki 3664 Setup Utility shortcut on the desktop.

2. Connect the 3664 to the computer and click "Run".



3. After setup is completed, disconnect the USB cable from the 3664 and computer, and click "Close" on the confirmation screen.



<<5. Application Uninstall>>

1. Select Windows > Start Menu > Settings > Control Panel and click Add/Remove Programs.
2. Select "Hioki 3664 Setup Utility" and click "Remove" or "Change/Remove".
3. Follow the directions on the screen to uninstall the software.

<<6. Error Display>>

If an error is displayed during 3664 Setup, refer to the following chart for troubleshooting.

Message	Possible cause and solution
Signal error. Check USB connection.	*There is a bad connection. ->Make sure that the 3664 and computer are properly connected. *The driver is not installed. -> Correctly install the driver. (Refer to "3. Driver Installation") *A necessary file for the application cannot be found. ->Reinstall the application. (Refer to "2. Application Installation")
There is no battery. Replace the battery.	*The battery is drained. ->Replace the 3664's battery, or connect the the AC adapter and try again.