

Z1009

FIXED STAND

Instruction Manual

Aug. 2018 Revised edition 2
Z1009A980-02 18-08H

EN

HIOKI
<http://www.hioki.com>

HEADQUARTERS
81 Koizumi
Ueda, Nagano 386-1192 Japan

HIOKI EUROPE GmbH
Rudolf-Diesel-Strasse 5
65760 Eschborn, Germany
hioki@hioki.eu



Our regional
contact
information

1808EN

Edited and published by HIOKI E.E. CORPORATION

Printed in Japan

- CE declarations of conformity can be downloaded from our website.
- Contents subject to change without notice.
- This document contains copyrighted content.
- It is prohibited to copy, reproduce, or modify the content of this document without permission.
- Company names, product names, etc. mentioned in this document are trademarks or registered trademarks of their respective companies.

Warranty Certificate

HIOKI

Model	Serial number	Warranty period
		Three (3) years from date of purchase (____ / ____ / ____)

Customer name: _____
Customer address: _____

Important

- Please retain this warranty certificate. Duplicates cannot be reissued.
- Complete the certificate with the model number, serial number, and date of purchase, along with your name and address. The personal information you provide on this form will only be used to provide repair service and information about Hioki products and services.

This document certifies that the product has been inspected and verified to conform to Hioki's standards.
Please contact the place of purchase in the event of a malfunction and provide this document, in which case Hioki will repair or replace the product subject to the warranty terms described below.

Warranty terms

- The product is guaranteed to operate properly during the warranty period (three [3] years from the date of purchase). If the date of purchase is unknown, the warranty period is defined as three (3) years from the date (month and year) of manufacture (as indicated by the first four digits of the serial number in YYMM format).
- If the product came with an AC adapter, the adapter is warranted for one (1) year from the date of purchase.
- The accuracy of measured values and other data generated by the product is guaranteed as described in the product specifications.
- In the event that the product or AC adapter malfunctions during its respective warranty period due to a defect of workmanship or materials, Hioki will repair or replace the product or AC adapter free of charge.
- The following malfunctions and issues are not covered by the warranty and as such are not subject to free repair or replacement:
 - 1. Malfunctions or damage of consumables, parts with a defined service life, etc.
 - 2. Malfunctions or damage of connectors, cables, etc.
 - 3. Malfunctions or damage caused by shipment, dropping, relocation, etc., after purchase of the product
 - 4. Malfunctions or damage caused by inappropriate handling that violates information found in the instruction manual or on precautionary labeling on the product itself
 - 5. Malfunctions or damage caused by a failure to perform maintenance or inspections as required by law or recommended in the instruction manual
 - 6. Malfunctions or damage caused by fire, storms or flooding, earthquakes, lightning, power anomalies (involving voltage, frequency, etc.), war or unrest, contamination with radiation, or other acts of God
 - 7. Damage that is limited to the product's appearance (cosmetic blemishes, deformation of enclosure shape, fading of color, etc.)
 - 8. Other malfunctions or damage for which Hioki is not responsible
- The warranty will be considered invalidated in the following circumstances, in which case Hioki will be unable to perform service such as repair or calibration:
 - 1. If the product has been repaired or modified by a company, entity, or individual other than Hioki
 - 2. If the product has been embedded in another piece of equipment for use in a special application (aerospace, nuclear power, medical use, vehicle control, etc.) without Hioki's having received prior notice
- If you experience a loss caused by use of the product and Hioki determines that it is responsible for the underlying issue, Hioki will provide compensation in an amount not to exceed the purchase price, with the following exceptions:
 - 1. Secondary damage arising from damage to a measured device or component that was caused by use of the product
 - 2. Damage arising from measurement results provided by the product
 - 3. Damage to a device other than the product that was sustained when connecting the device to the product (including via network connections)
- Hioki reserves the right to decline to perform repair, calibration, or other service for products for which a certain amount of time has passed since their manufacture, products whose parts have been discontinued, and products that cannot be repaired due to unforeseen circumstances.

HIOKI E.E. CORPORATION
<http://www.hioki.com> 18-07 EN-3

Introduction

Thank you for purchasing the HIOKI Model Z1009 Fixed Stand. To obtain maximum performance from the device, please read this manual first, and keep it handy for future reference.

Overview

The Z1009 Fixed Stand is a fixed mounting bracket for the HIOKI LR8410 Wireless Logging Station. It can be used as a desk stand, or for panel wall mounting.

Inspection

- When you receive the product, inspect it carefully to ensure that no damage occurred during shipping. In particular, check the accessories. If damage is evident, or if it fails to operate according to the specifications, contact your dealer or Hioki representative.
- Before using the product the first time, verify that it operates normally to ensure that no damage occurred during storage or shipping. If you find any damage, contact your dealer or Hioki representative.

Package Contents

- ☐ Holder 1
- ☐ Stand Base 1
- ☐ Decorative screws 2
- ☐ M3×5 screw 2
- ☐ Rubber feet 6

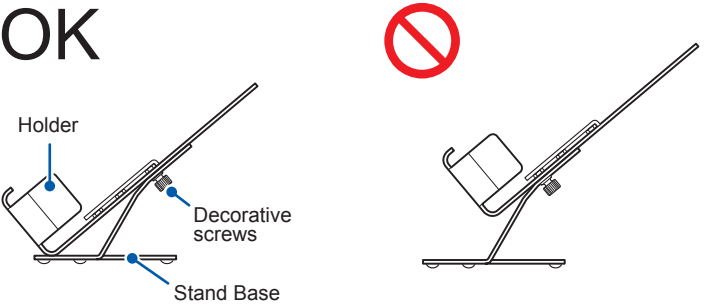
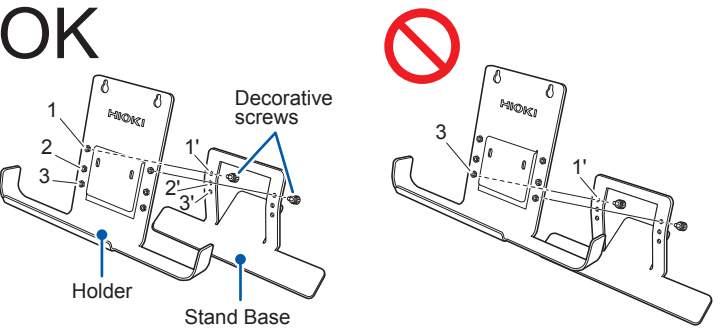
Maintenance and Service

- To clean the product, wipe it gently with a soft cloth moistened with water or mild detergent. Never use solvents such as benzene, alcohol, acetone, ether, ketones, thinners or gasoline, as they can deform and discolor the case.
- If the product seems to be malfunctioning, contact your dealer or Hioki representative.
- Pack the product so that it will not sustain damage during shipping, and include a description of existing damage. We do not take any responsibility for damage incurred during shipping.

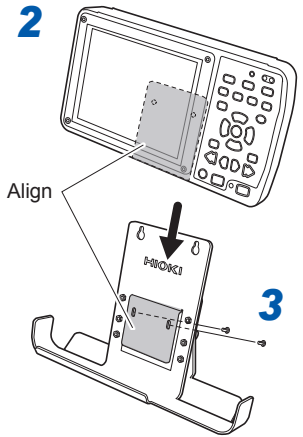
Attaching the Stand

If using as a tabletop stand

- 1 Align the holder with the stand base and attach the holder to the base with the two included decorative screws, inserting them from the base side.**
 - By using different pairs of screw holes, you can attach the holder at any of three angles.
 - Exercise care to align the holes on the holder and the stand base (1 with 1', 2 with 2', and 3 with 3'). Do not use nut 3 with hole 1'.
 - Tighten the screws until the bottom of the holder comes into contact with the stand base.



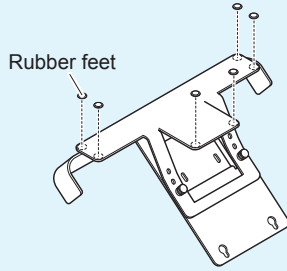
- 2 Aligning the groove on the holder with the groove on the back of the LR8410 Wireless Logging Station, place the LR8410 on the holder.**



- 3 When attaching the LR8410 Wireless Logging Station to the Z1009 Fixed Stand, secure it in place with the included screws from the back.**

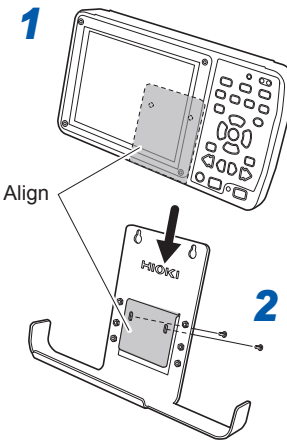
Use M3 × 5 mm screws. If you use screws longer than 5 mm, they may damage the LR8410 Wireless Logging Station by pushing against it.

If the fixed stand slides around on the surface on which you're using it, apply the included rubber feet to the stand base.



Wall mounting (Do not use the stand base.)

- 1 Aligning the groove on the holder with the groove on the back of the LR8410 Wireless Logging Station, place the LR8410 on the holder.**



- 2 Attach the LR8410 Wireless Logging Station to the holder with the included M3 × 5 mm screws from the back.**

(Use M3 × 5 mm screws. If you use screws longer than 5 mm, they may damage the LR8410 Wireless Logging Station by pushing against it.)

- 3 Mount the holder and LR8410 Wireless Logging Station to the wall with two M4 screws.**

(Screws for mounting the holder on the wall are not included. Use appropriate commercially available screws. It is recommended to use screws that are at least 8 mm in length.)

